

gsky®



versatile **reliable** proven



Hi All,

I am excited to be a part of the wonderful story we are creating at GSKy®. Our team of dedicated and experienced green wall specialists can help you realize your goals in bringing nature to your project.

Our Vision is to bring **“living green spaces to everyday places where people live, work & play”** & in doing so, enhance the environmental & psychological benefits for our increasing urbanization & population.

We believe there is not just one way to meet a client’s needs for greening spaces. We endeavor to create solutions that are affordable, adaptable, & maintainable around the globe.

With over 15 years of expertise & knowledge, we have developed a proven process that guarantees a healthy & successful green wall.

Our Mission is to be a product development company offering solutions to the challenge of putting plants on vertical structures. Additionally, we have created a Global Network of partners, suppliers & plant sources to not only make these solutions serviceable & lasting, but to support clients with multiple sites often in different geographies.

GSKy® provides more than just a system, but an all-inclusive green wall package to support clients from start to finish, offering peace of mind in each stage of the process.

Hal Thorne, Chairman & CEO

CONTENTS

| | |
|--|-----------|
| GSKy® Overview..... | 4 |
| About GSKy®..... | 5 |
| Green Wall Growth Drivers..... | 6 |
| Multiple Products for Different Applications..... | 8 |
| | |
| INTERIOR WALLS..... | 10 |
| Interior Process..... | 16 |
| | |
| EXTERIOR WALLS..... | 20 |
| Parking Structures..... | 29 |
| Exterior Process..... | 30 |
| | |
| SERVICE & SUPPORT..... | 32 |
| Versatile/Reliable/Proven..... | 34 |



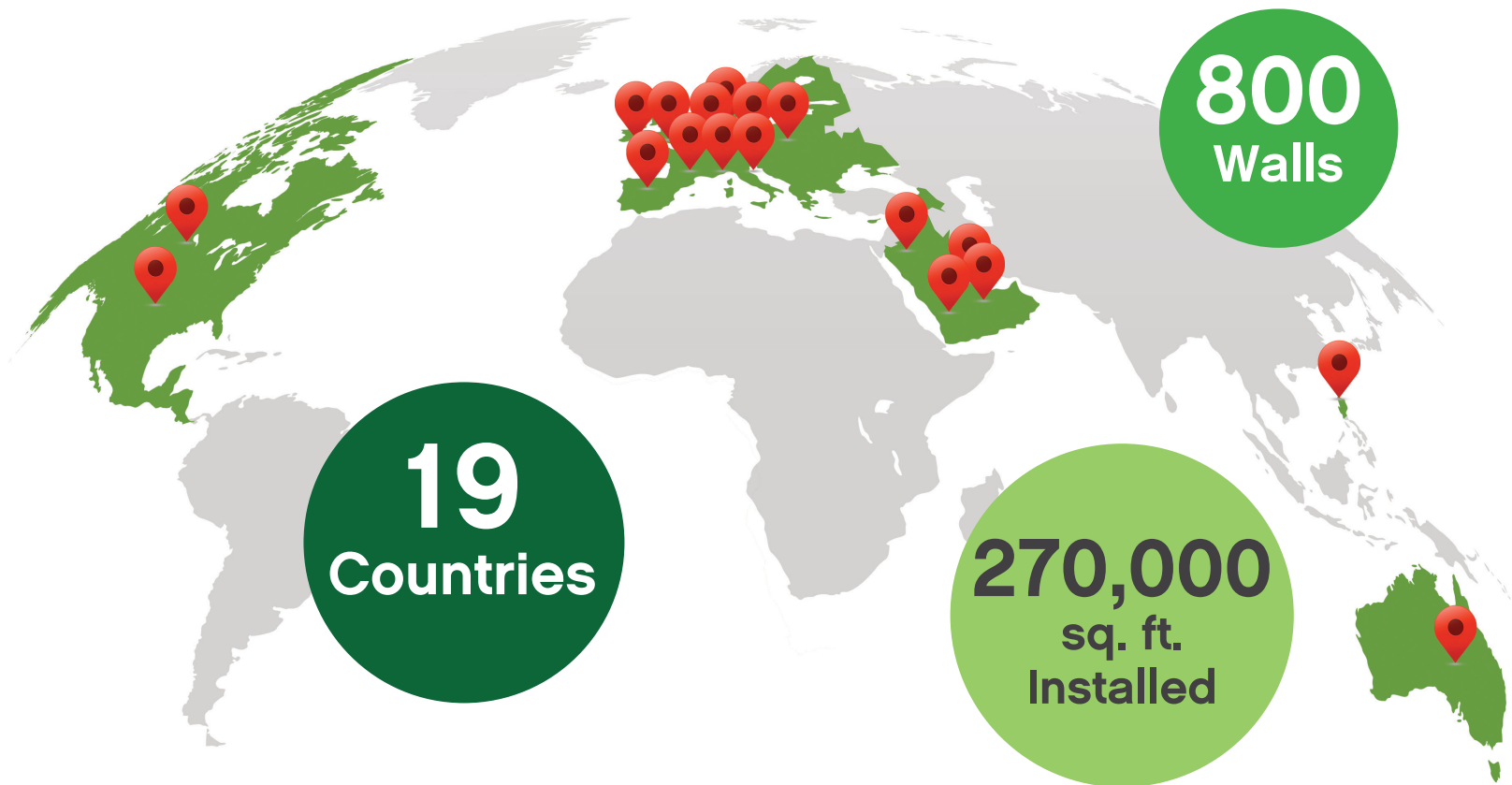
VERTICAL

by
Design

Airbnb, San Francisco, California

GSky® OVERVIEW

GSky Plant Systems, Inc. is an award-winning **Global Provider of Living Green Walls** & vertical gardens tailored to fit your interior & exterior green wall needs. With the right system & a bit of planning, you can have a beautiful thriving green wall in a huge variety of locations & designs.



“ Europe is very excited to have GSky® as part of our market. Their design possibilities are multifarious & easy to implement. ”

4 **Caroline Böttle, Owner** *Hydro Böttle GmbH, Schenefeld, Germany*



ABOUT GSky®

- Founded in 2004
- Experienced Designers
- Plant Knowledge
- Turnkey Systems
- Unique Products
- Corporate Clients with Multiple Locations
- A Global Dealer Network

The Avenues Mall, Kuwait

GREEN WALL GROWTH DRIVERS

- **BIOPHILIA**, or people's tendency to seek a connection with nature, is rapidly being integrated into architecture & interior design.
- **GREEN BUILDING INITIATIVES** resulting from increasing urbanization & environmental concerns.



Etsy, Brooklyn, New York



BENEFITS

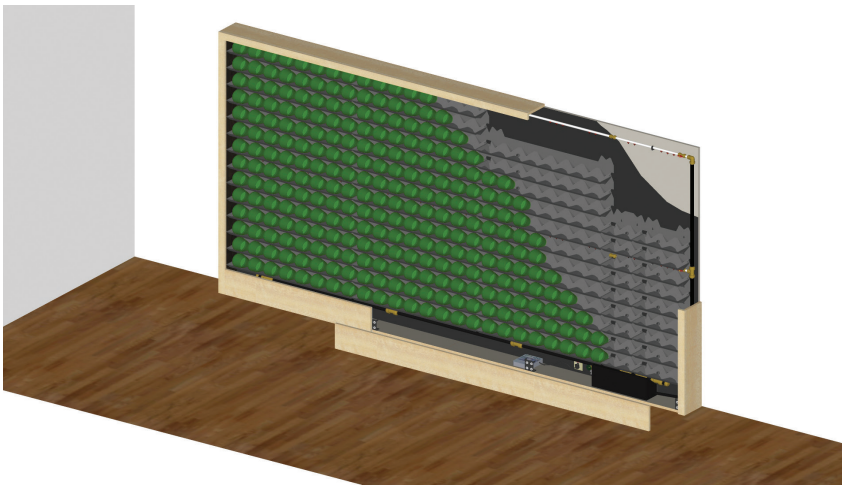
- Artistic Features
- Cleaner Air
- Sound Absorption
- Cooling Factor
- Stress Reduction
- Employee Morale
- Branding
- Increased Property Value
- Increased Awareness of Green Initiatives

Sway Apartments
Santa Monica, California

INTERIOR

VERSA WALL®

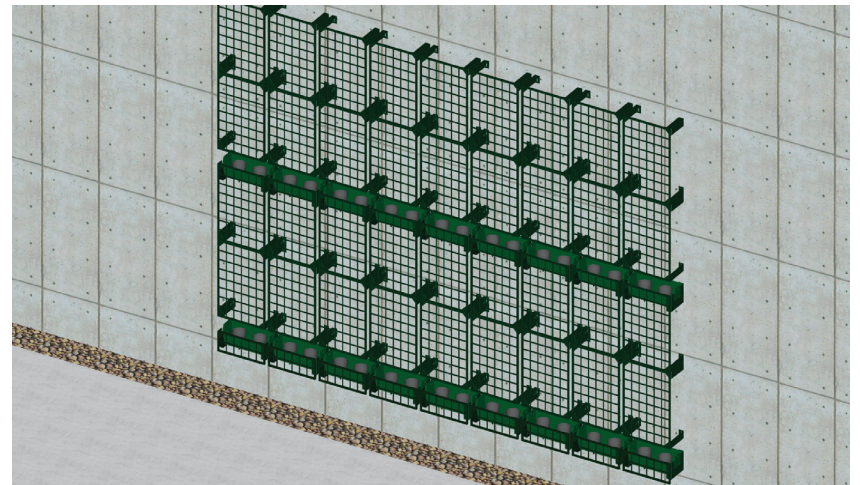
- The most versatile system on the market.
- The system can be configured to any size & can install around doors, windows, corners or columns.
- It does not require constant watering, which is beneficial for plant health & sustainability.



EXTERIOR

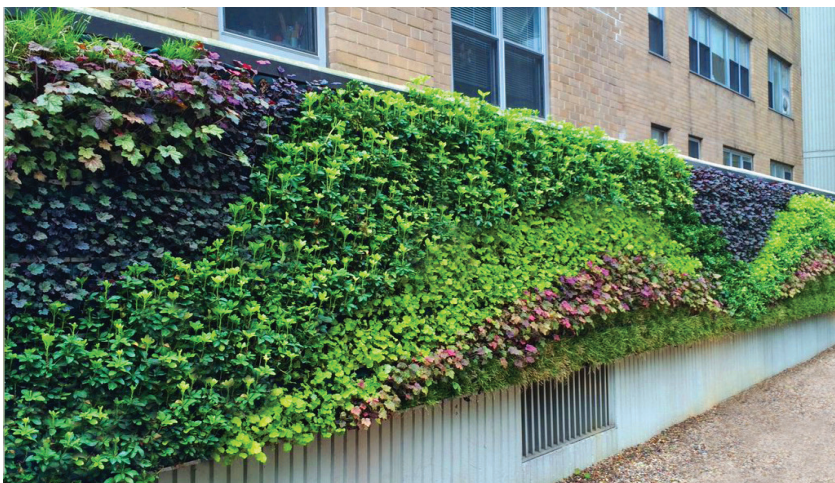
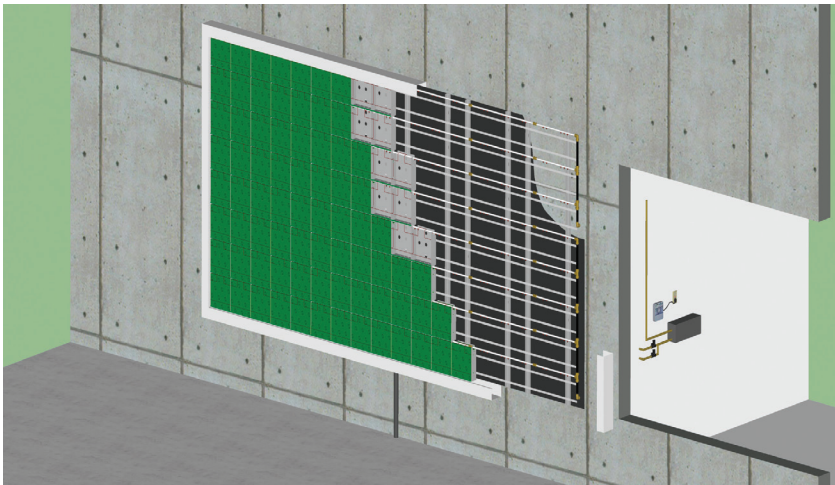
BASIC WALL®

- Our lowest cost system designed for greater heights.
- Intended for screening of unsightly structures or structures in high traffic areas where plants are difficult to introduce.
- The service frequency is less.



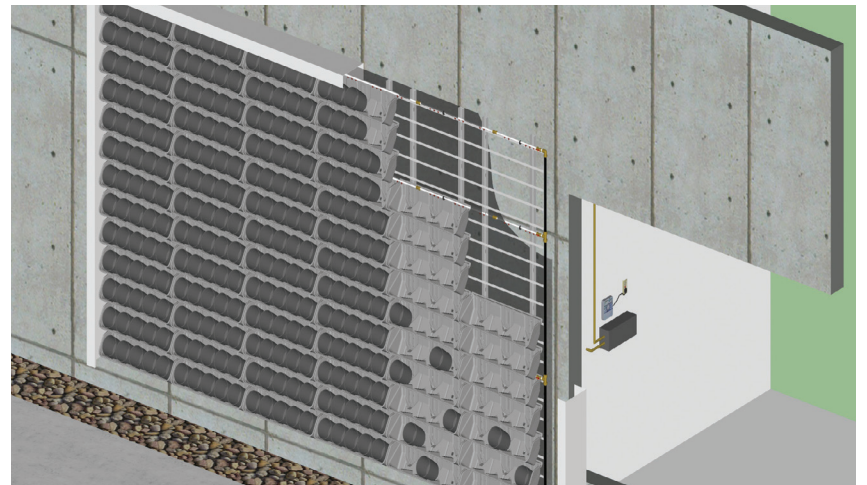
PRO WALL®

- Our most robust system, which allows the most detailed design of any system.
- Engineered to withstand high winds.
- It is not suitable for northern climates with extreme temperatures.



VERSA WALL® XT

- Our proprietary tray technology for the outdoors.
- Easy to keep looking full with easy plant replacement & the ability to redesign.
- This system is suitable for any climate, but in northern climates with extreme temperature changes, it is recommended as a seasonal wall storing or removing plants for the winter.



INTERIOR - VERSA WALL®

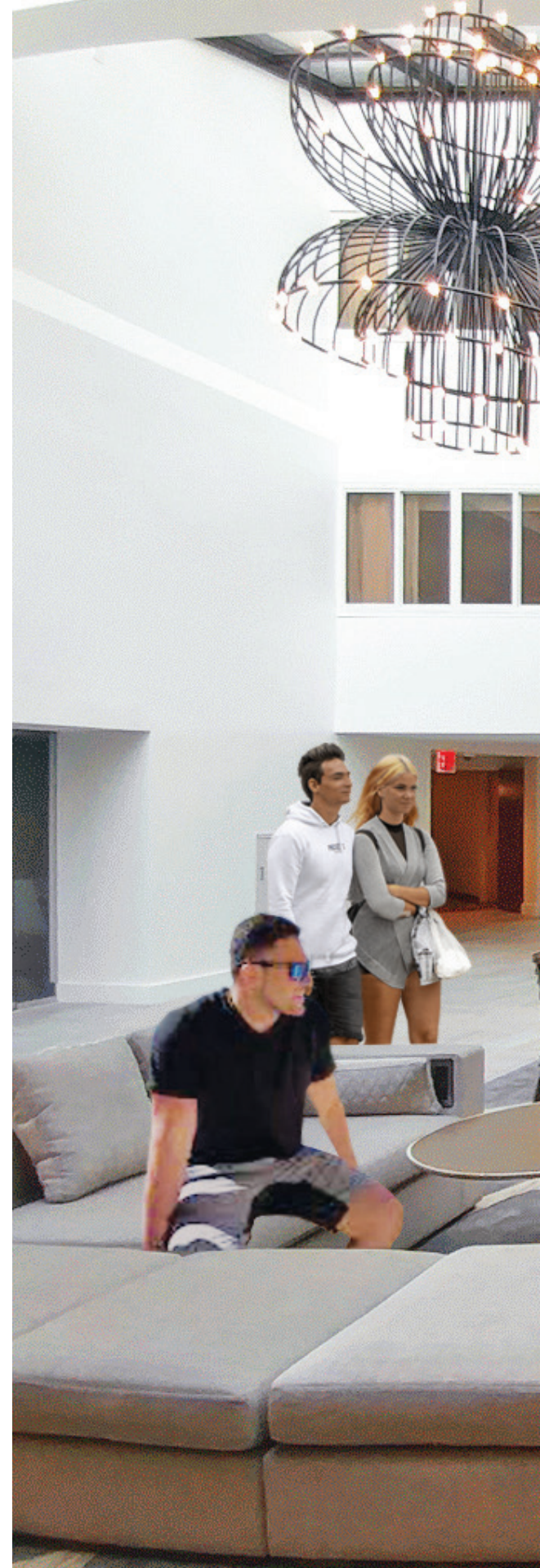
The Versa Wall® system was introduced in 2011 due to our dissatisfaction with the performance & upkeep of pre-planted panels indoors. Since then, over 600 Versa Walls have been installed.

If you want to improve workplace performance by bringing nature indoors or enhance environmental & acoustical elements in your building or if you simply want to make a statement or enhance your branding, GSky's Versa Wall® system is a perfect fit.

Let our award-winning plant design team work with you to achieve your vision or support your branding.

“ *Our GSky® green wall is a real attention getter. It has become the centerpiece for our guests where they can socialize & helps sell our hotel for business events & weddings. Many bridal parties use the wall as a backdrop for their pictures.* ”

Nancy Hendricks-Holman, *Director of Event Management*
Long Island Marriott





Long Island Marriot
Uniondale, New York



“The GSky® green wall visually connects the 3 levels of the multi-tenant building & provides countless points of connection for the buildings varied occupants.”

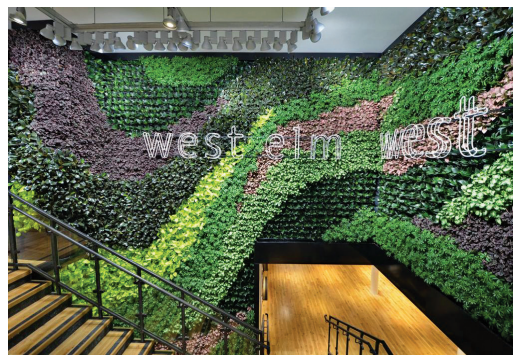


McGuire Building, San Francisco, California

versatilereliableproven

INCORPORATING ELEMENTS





INTERIOR PROCESS



6

Organize Hard
Materials & Plants

7

Determine Site Readiness:
Lighting, Water, Electricity

8

Install GSKy®
Proven System

9

Install Plants &
Maintenance Begins



Sonos, Boston, Massachusetts





EXTERIOR WALLS

GSky® Offers 3 System Options For Clients:

- 1. Pro Wall®** (pre-planted) for high design & large applications (not recommended for northern climates). This system requires four months grow time.
- 2. Versa Wall® XT** tray system uses larger 1-gallon potted plants that are easy to replace & change (suitable for all climates, but a seasonal option for northern climates). Does not require growth time & is easy to replace plants with full plants.
- 3. Basic Wall®** vine screening system is intended to screen unsightly structures & remain full from bottom to top. Less cost & design.

Each is water efficient & fully automated.

1



2



“ People are always stopping in wonder of it. Most don’t believe it’s real. We see weddings taking photos in front of it all the time. It’s been great for business. ”

Local Business Owner
Worth Avenue, Palm Beach, FL

3



versatile **reliable** proven

EXTERIOR - PRO WALL®

The Pro Wall® system was our very first product developed in 2004. Since that time, it has undergone several upgrades. Today it is a very reliable exterior system in climates with little prolonged freezing temperatures.



Publix, Aventura, Florida



Saks Fifth Avenue

Worth Avenue, Palm Beach, Florida

EXTERIOR - VERSA WALL® XT

The Versa Wall® XT system was designed to eliminate the wait time for pre-planted systems, make plant replacements easier & provide simple seasonal options for cold climates.



Proctor & Gamble, Inwood, West Virginia

Same plants, Spring & Fall



SPRING



SUMMER



FALL



WINTER



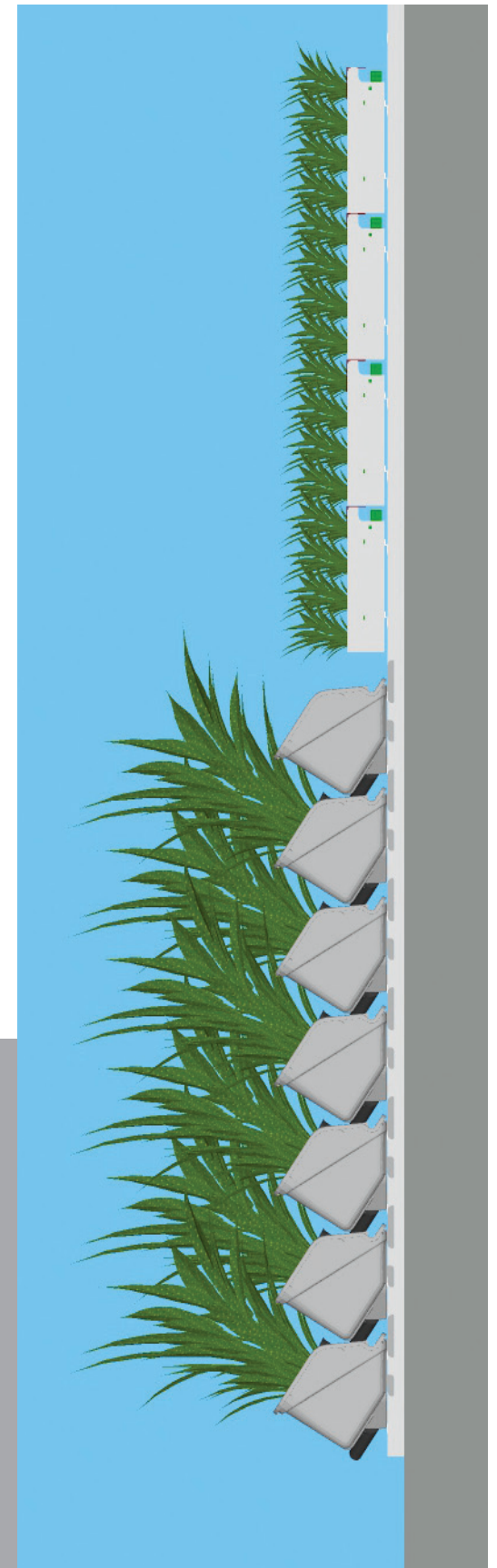
CHOOSING BETWEEN THE PRO WALL® & VERSA WALL® XT

- **Versa Wall® XT** plants are in 1-gallon pots & accommodates quicker plant replacement & design changes.
- **Pro Wall®** allows for more formal design with 12 plants per sq. ft.
- **Versa Wall® XT** can be installed in more geographic locations.
- **Pro Wall®** generally needs a longer planning horizon from start to finish.

If depth is an issue, with plants the **Versa Wall® XT** is 16"-18"
while the **Pro Wall®** is 10"-12"

“ The different systems allow perfect configuration & guarantee perfect irrigation for the plants. Plant material is of top quality & long lasting. ”

Green Team Solutions
Palm Beach, Florida



PRO WALL®



VERSA WALL® XT



EXTERIOR - BASIC WALL®

The Basic Wall® is designed to provide simple screening of buildings & structures with the ability to keep a “full” plant wall up great heights.

Basic Wall®

Hyde Beach Resort & Residences, *Hallandale, Florida*



PARKING STRUCTURES

Parking structures are often the first place viewed by customers coming to an office building. They are often concrete facades which are unattractive, retain heat, in high traffic areas & do not absorb sound.

Increasingly, owners or developers are being required to add a certain percentage of vegetation. All GSky® exterior wall systems can be used, depending upon the height & the desired look – simple screening versus higher-end design.



Pro Wall®



Transwestern Sunset Blvd., Hollywood, California



Versa Wall® XT

Vancouver International Airport, Vancouver, Canada

EXTERIOR PROCESS

1

Pull Together
Project Details

2

Contract

3

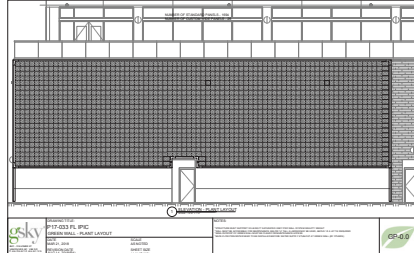
Shop Drawing
& Approval

4

Evaluate Site
Environmental
Conditions

5

Plant Design



6

Acquire Plants

* If Pro Wall®, plant wall at nursery & allow for a 4-month grow period.



7

Determine Site Readiness: Water, Electricity, Cleaned Area Access



8

Install GSKy® Proven System



9

Install Plants & Maintenance Begins



IPIC Theatre
Delray Beach, Florida





SERVICE & SUPPORT

GSky® is committed to meeting clients' expectations before, during & after installation for any of our green wall systems. All of our green wall systems are designed to be as low maintenance & require as few visits as possible. Proper service provides you with a successful & beautiful green wall.

PRE-INSTALL CONSIDERATIONS

The largest challenge with a green wall's service is access. If the wall is going to be put in a place where it will be difficult or costly to access on a regular basis, then it may not work. Proper lifts, ladders or other access systems must be included in the budget. Storage must be arranged & training provided for technicians.

For interior walls, lighting must be addressed prior to the green wall design. Adequate lighting is 150-foot candles across the wall at approximately 4,000 Kelvin color temperature.

3-Point Comprehensive Maintenance Program

Our maintenance program is required for at least the first year. Not only do plants need maintenance, but the green wall's irrigation, fertigation, water recirculation & drainage systems require maintenance as well.

- 1** Maintenance is backed by a comprehensive **PLANT GUARANTEE** while under **GSky®** contract.
- 2** Every green wall is different & requires **REGULAR VISITS** to ensure it looks its best.
- 3** **PERIODIC CHECK-UPS** are performed to ensure excellent plant health, proper moisture levels & that the system is functioning properly.

**Your wall is our wall.
At GSky[®], we are
committed to our
clients' experience &
to a proper functioning
beautiful green wall.**



VERSATILE

GSky's four different wall systems can meet most design needs for interior or exterior walls.

In addition, our components allow for working around windows, doors, corners & columns. Finally, our geographic span allows clients to support brand needs as well as corporate & multiple site management.

RELIABLE

From start to finish to after-install care, a client can rely upon our experience & processes to provide & keep a wall looking as envisioned.

We have 18 multi-campus clients who combined have over 137 GSky® living green walls.

PROVEN

With over 15 years in the design, installation & maintenance of living green wall systems on four continents, our systems are standing the test of time.

Additionally, we have learned how to remotely manage &/or supervise the design & aftercare of our systems working with our growing Global Network of partners.



versatile **reli**lia

OFFICES

USA

25 Seabreeze Avenue, Suite 404
Delray Beach, Florida 33483

CANADA

318 Homer Street, Unit 601
Vancouver, BC V6B 2V2

SALES LOCATIONS

San Clemente, California
San Antonio, Texas
Denver, Colorado
Hamburg, Germany

T: 561.894.8688

F: 561.274.1922

For more information visit gsky.com

bleproven

gsky®

190601



GSKY.COM