

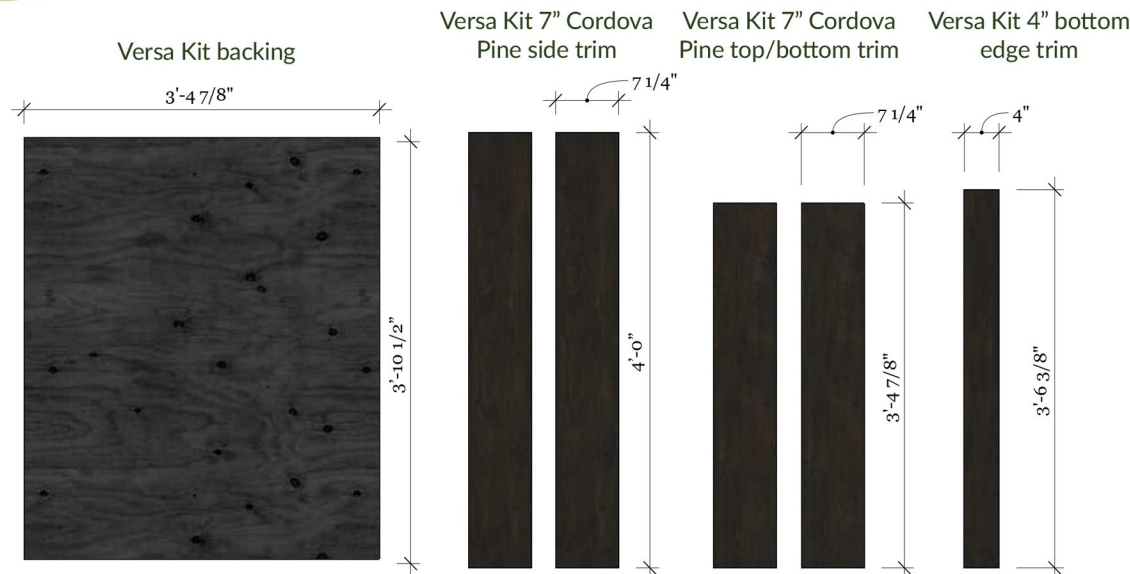


Designer Series E-Z Kit Wall Installation Guide

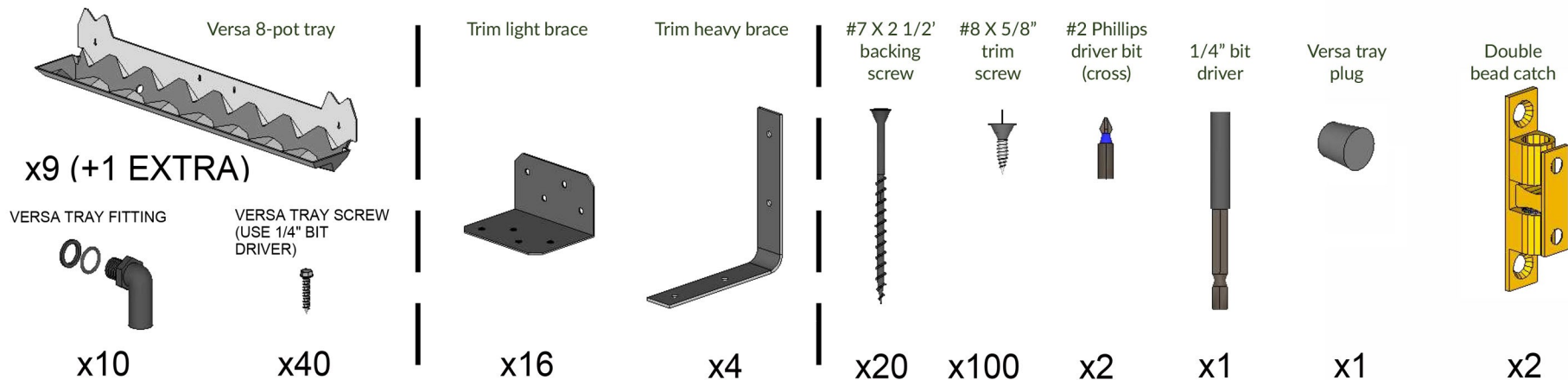
Required tool list (not included)

- Utility knife
- 2' level
- Tape measure
- Stud finder
- Straight edge
- Cordless drill

Trim Kit



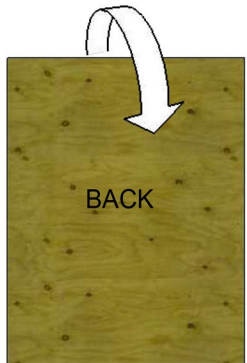
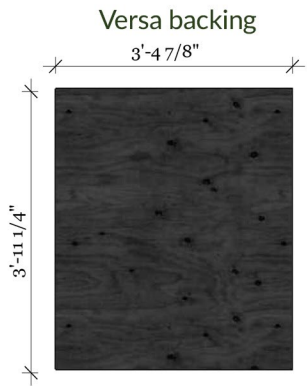
Tray Hardware Kit





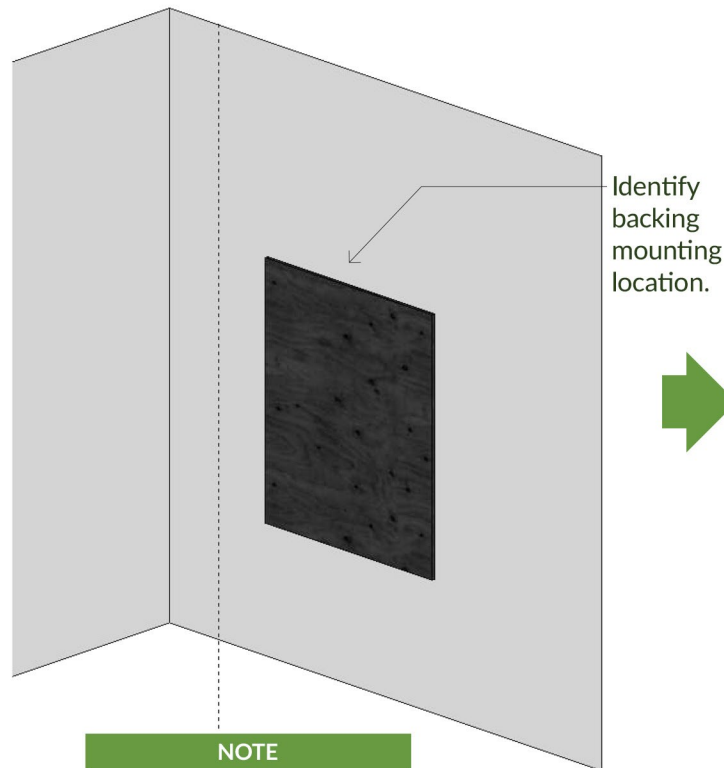
Designer Series E-Z Kit Wall Installation Guide

Parts used on this page.



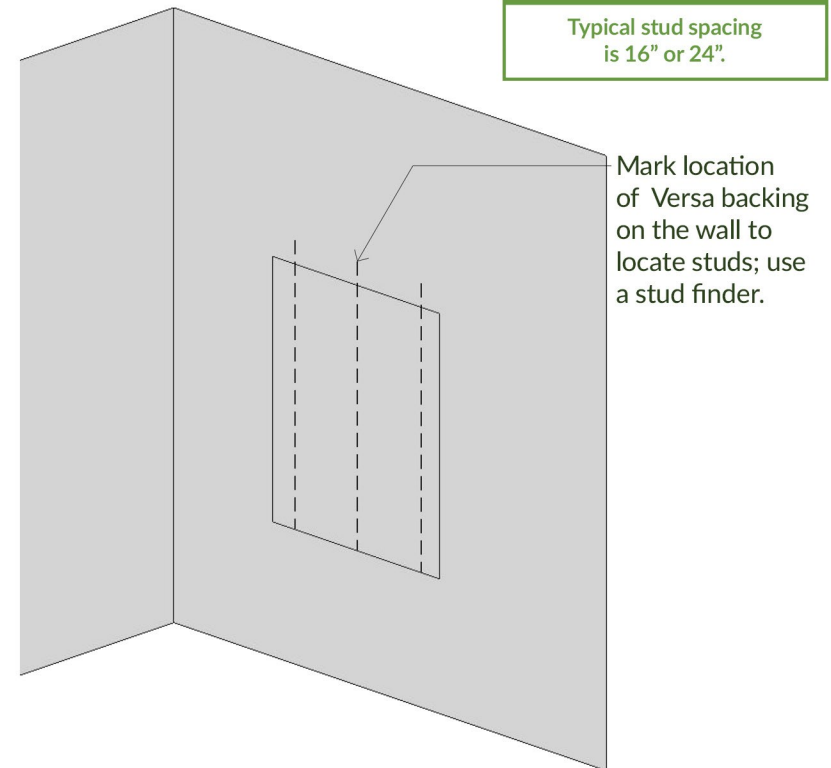
Tools used on this page.

- Pencil/pen
- 2' level
- Tape measure
- Stud finder



NOTE
Final dimensions will be 3/4" larger on each side including trim.

Step 1
Align backing on the wall.



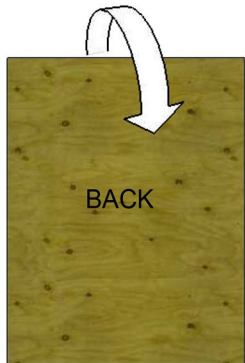
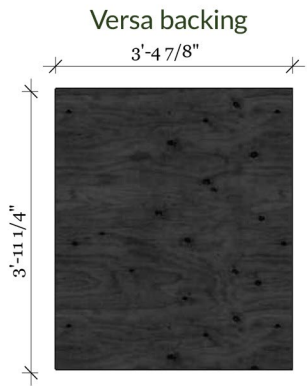
NOTE
Typical stud spacing is 16" or 24".

Step 2
Versa backing location on the wall.



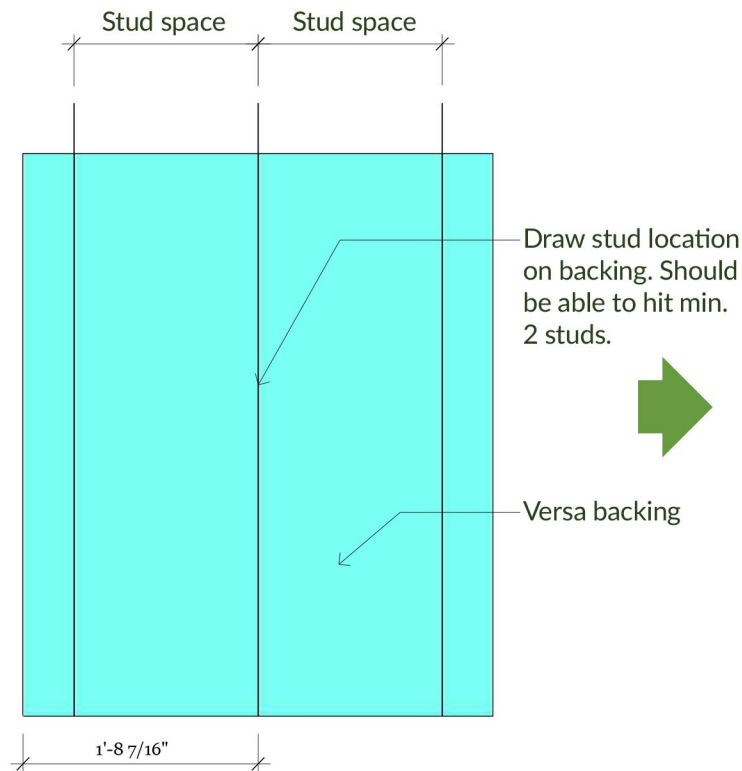
Designer Series E-Z Kit Wall Installation Guide

Parts used on this page.



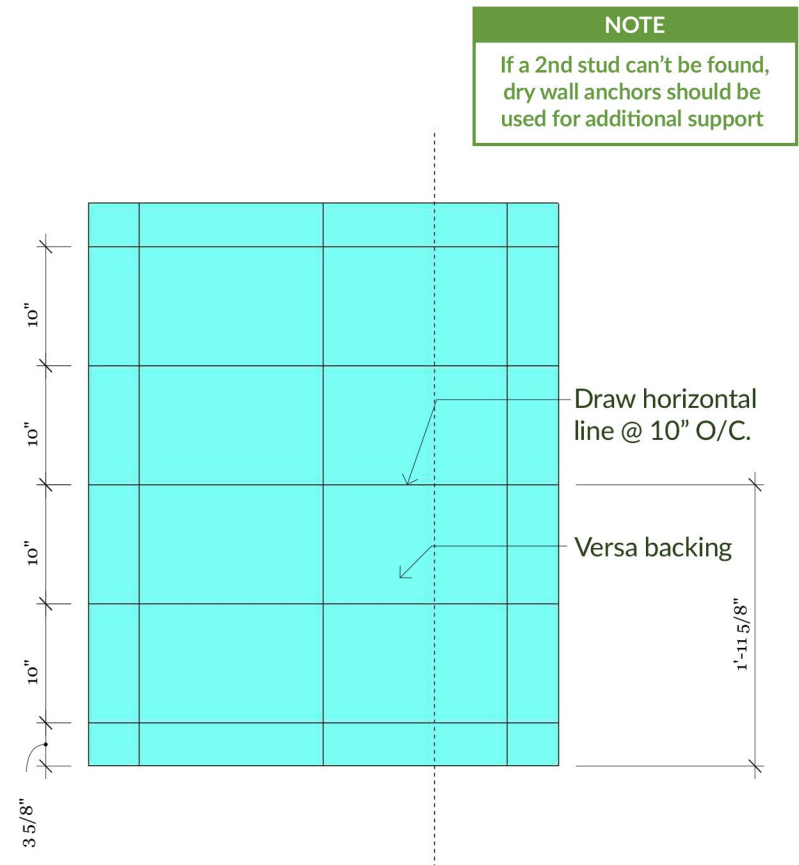
Tools used on this page.

- Pencil/pen
- Tape measure
- Straight edge



Step 1

Stud location on Versa backing.



Step 2

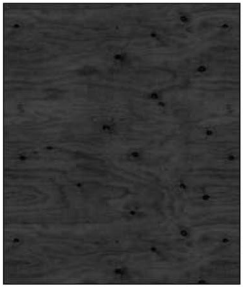
Screw location on Versa backing.



Designer Series E-Z Kit Wall Installation Guide

Parts used on this page.

Versa backing

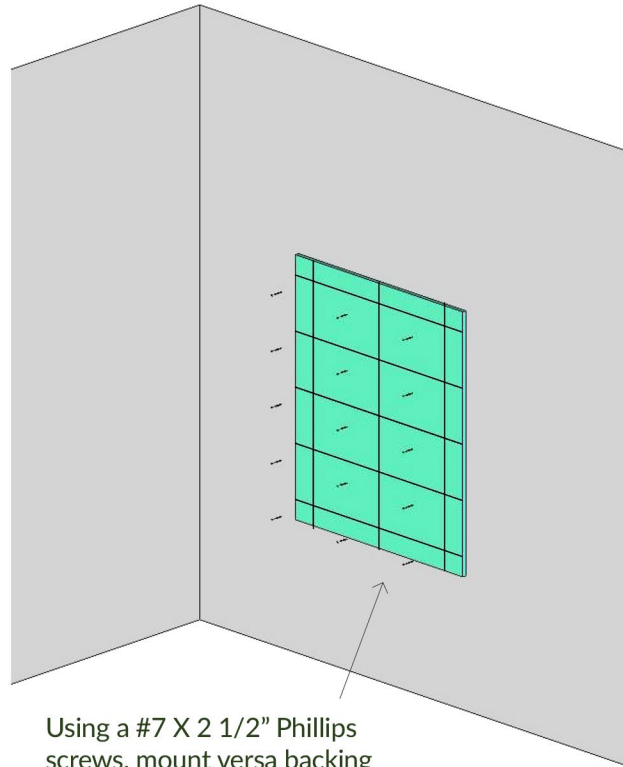


#7 X 2 1/2"
Phillips Screw



Tools used on this page.

- 2' level
- Cordless drill
- #2 Phillips driver bit (included)



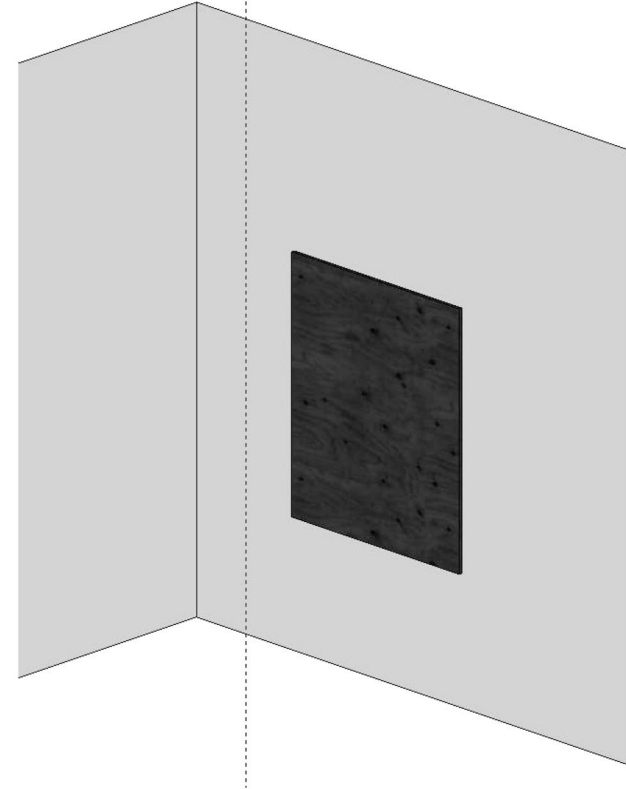
Using a #7 X 2 1/2" Phillips screws, mount versa backing on the wall.

NOTE

Fasteners for non-wood/steel stud are not included

Step 1

Stud location on Versa backing.



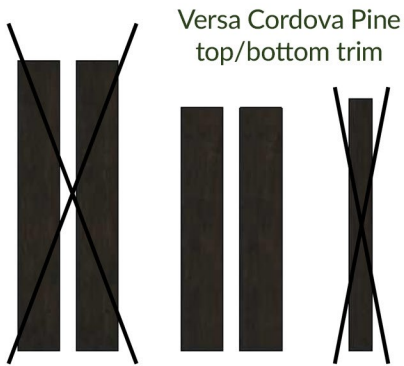
Step 2

Screw location on Versa backing.



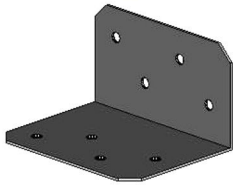
Designer Series E-Z Kit Wall Installation Guide

Parts used on this page.



Versa Cordova Pine
top/bottom trim

Trim light brace

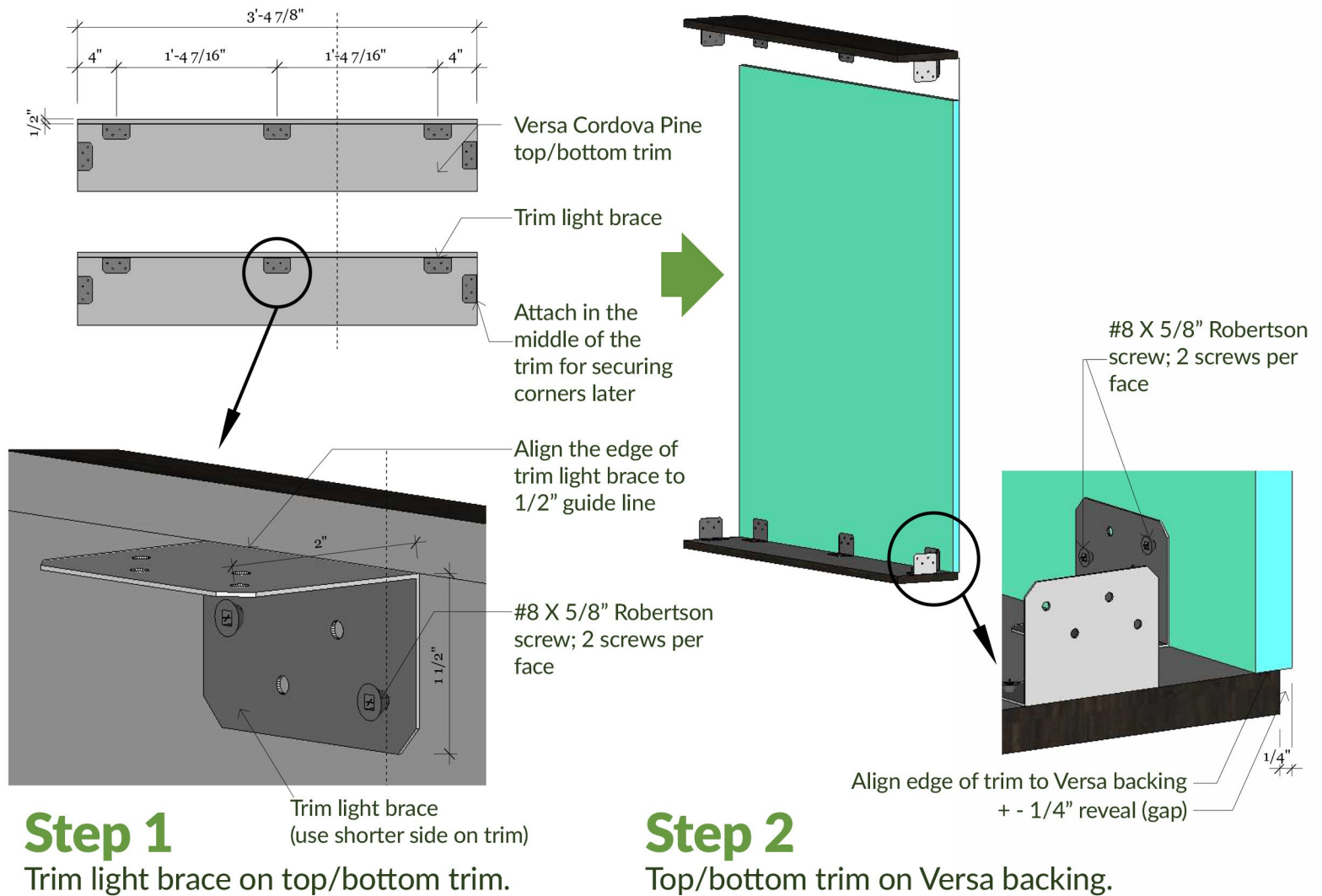


#8 X 5/8" screw



Tools used on this page.

- pencil/pen
- tape measure
- Cordless drill
- #2 Phillips driver bit (included)

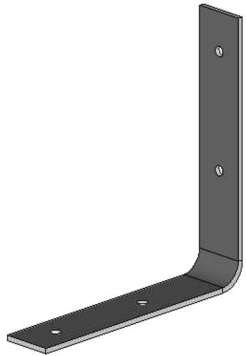




Designer Series E-Z Kit Wall Installation Guide

Parts used on this page.

Trim heavy brace

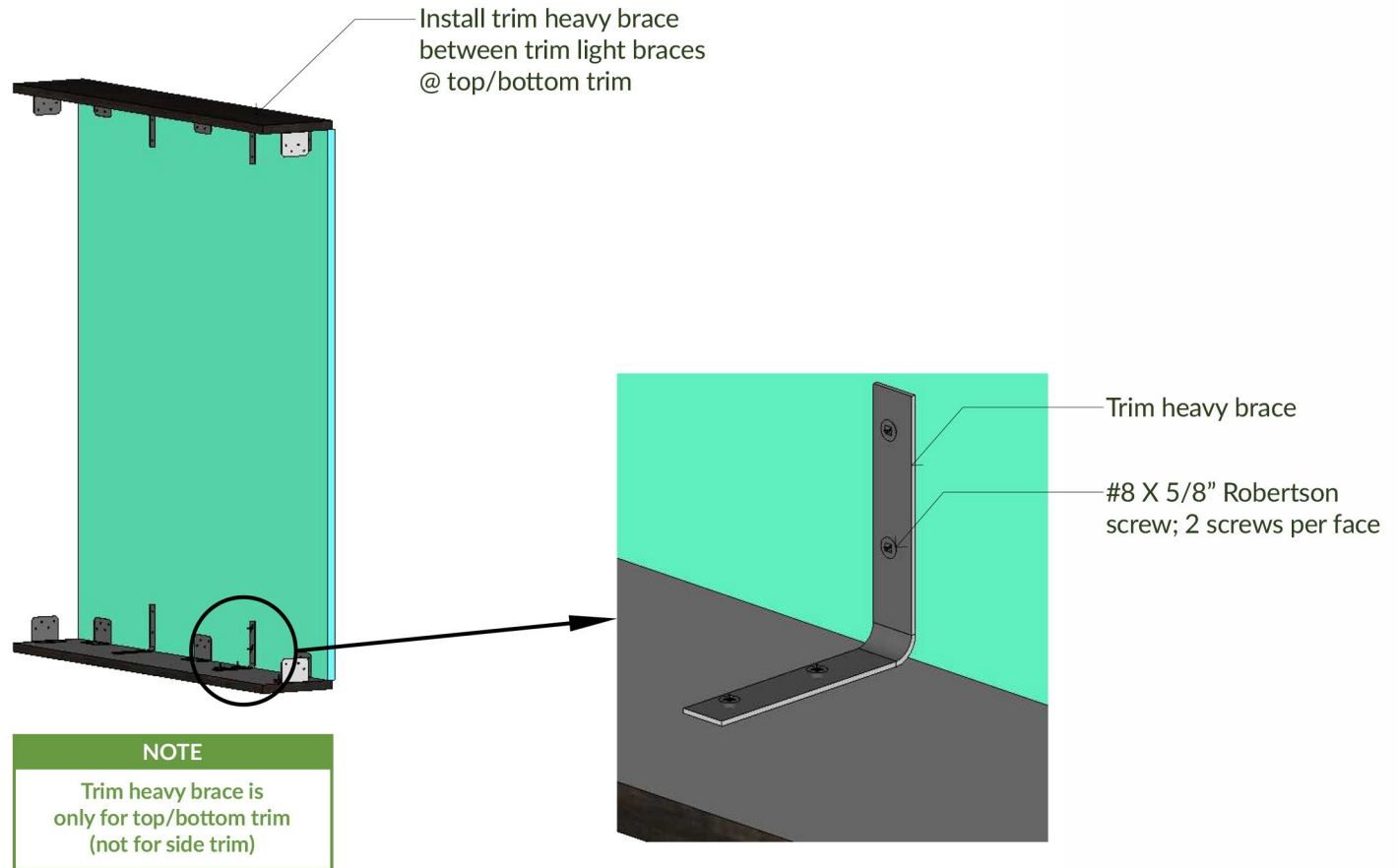


#8 X 5/8" trim screw



Tools used on this page.

- pencil/pen
- tape measure
- Cordless drill
- #2 Phillips driver bit (included)



Step 1

Trim heavy brace on top/bottom trim.



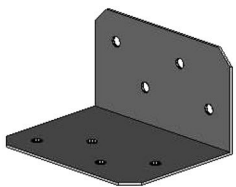
Designer Series E-Z Kit Wall Installation Guide

Parts used on this page.
Versa backing

Versa Cordova Pine side trim



Trim light brace

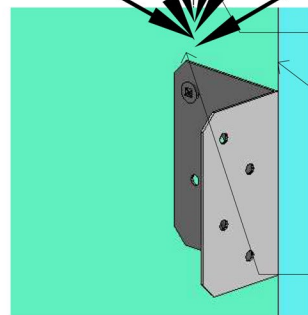
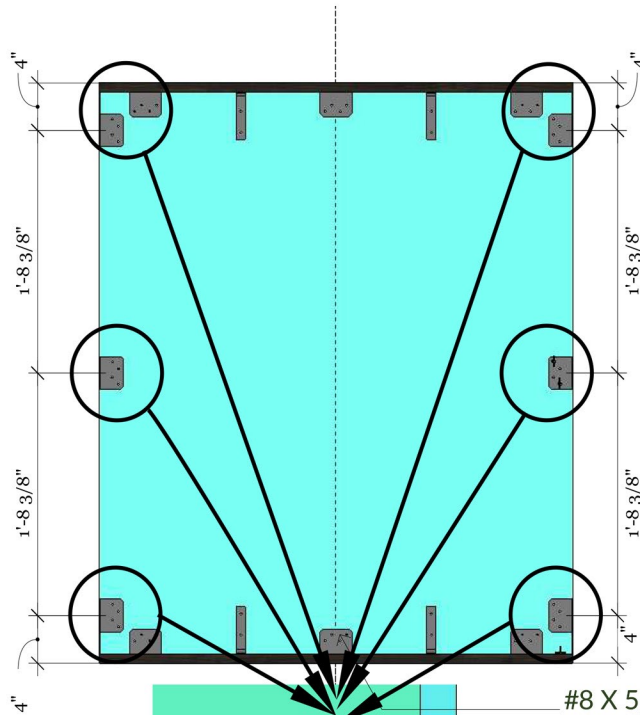


#8 X 5/8" trim screw



Tools used on this page.

- pencil/pen
- tape measure
- Cordless drill
- #2 Phillips driver bit (included)



#8 X 5/8" Robertson screw; 2 screws per face

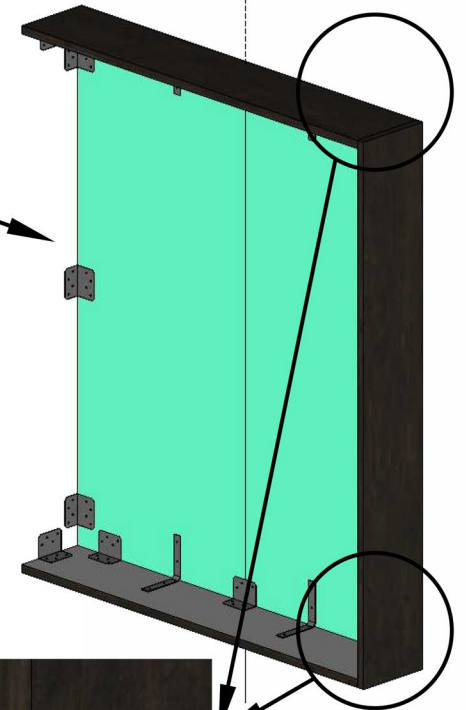
Align the edge of Versa backing to trim light brace

Use longer side on Versa backing

Step 1

Trim light brace on Versa backing.

Versa Cordova Pine side trim



Align the face of side trim to top/bottom trim

Step 2

Side trim.

NOTE

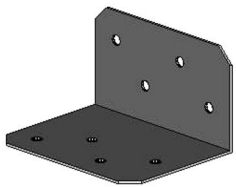
Make sure to align the face of side trim to both top/bottom trim



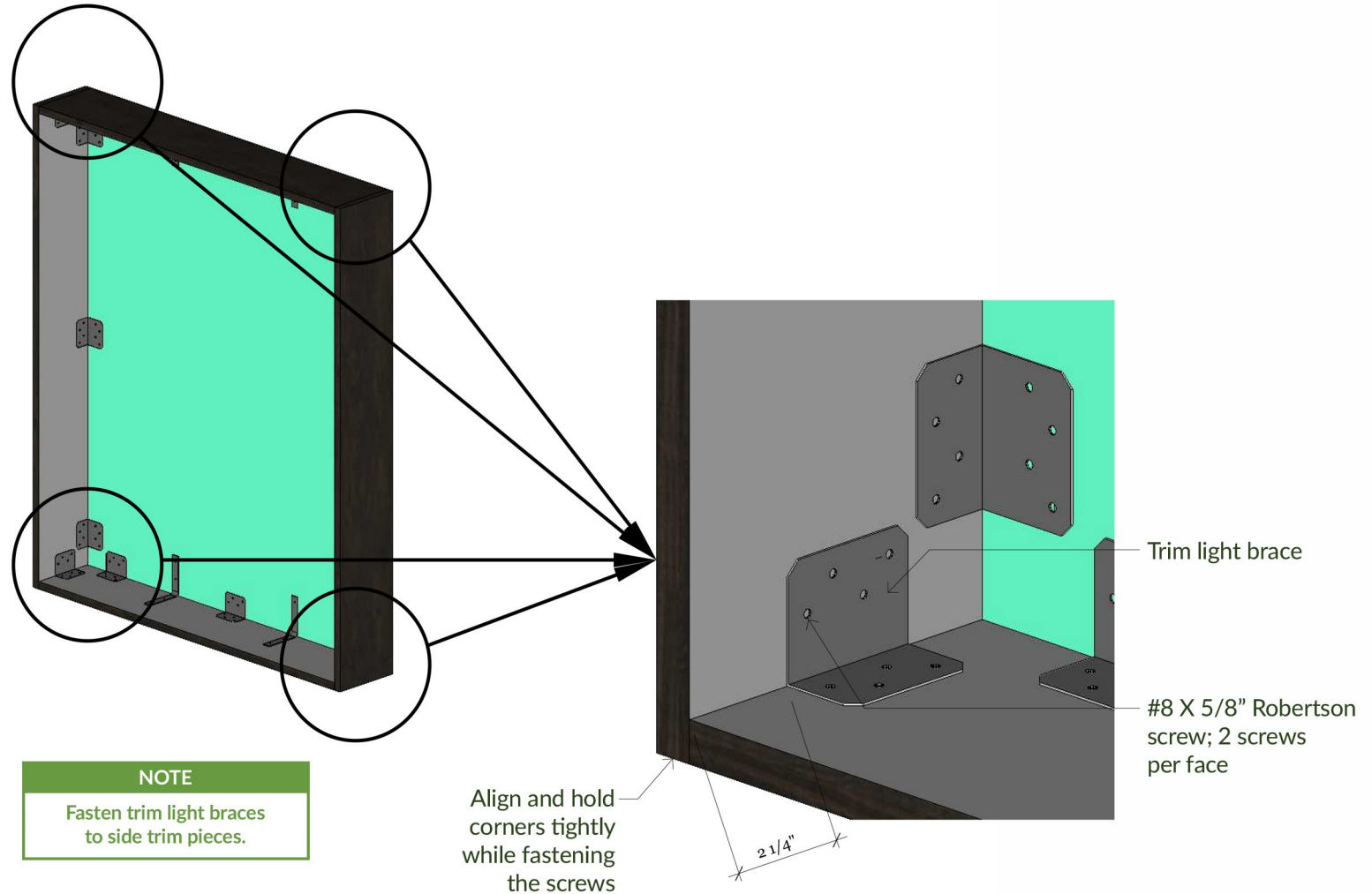
Designer Series E-Z Kit Wall Installation Guide

Parts used on this page.

Trim light brace



#8 X 5/8" trim screw



Tools used on this page.

- pencil/pen
- tape measure
- Cordless drill
- #2 Phillips driver bit (included)

Step 1

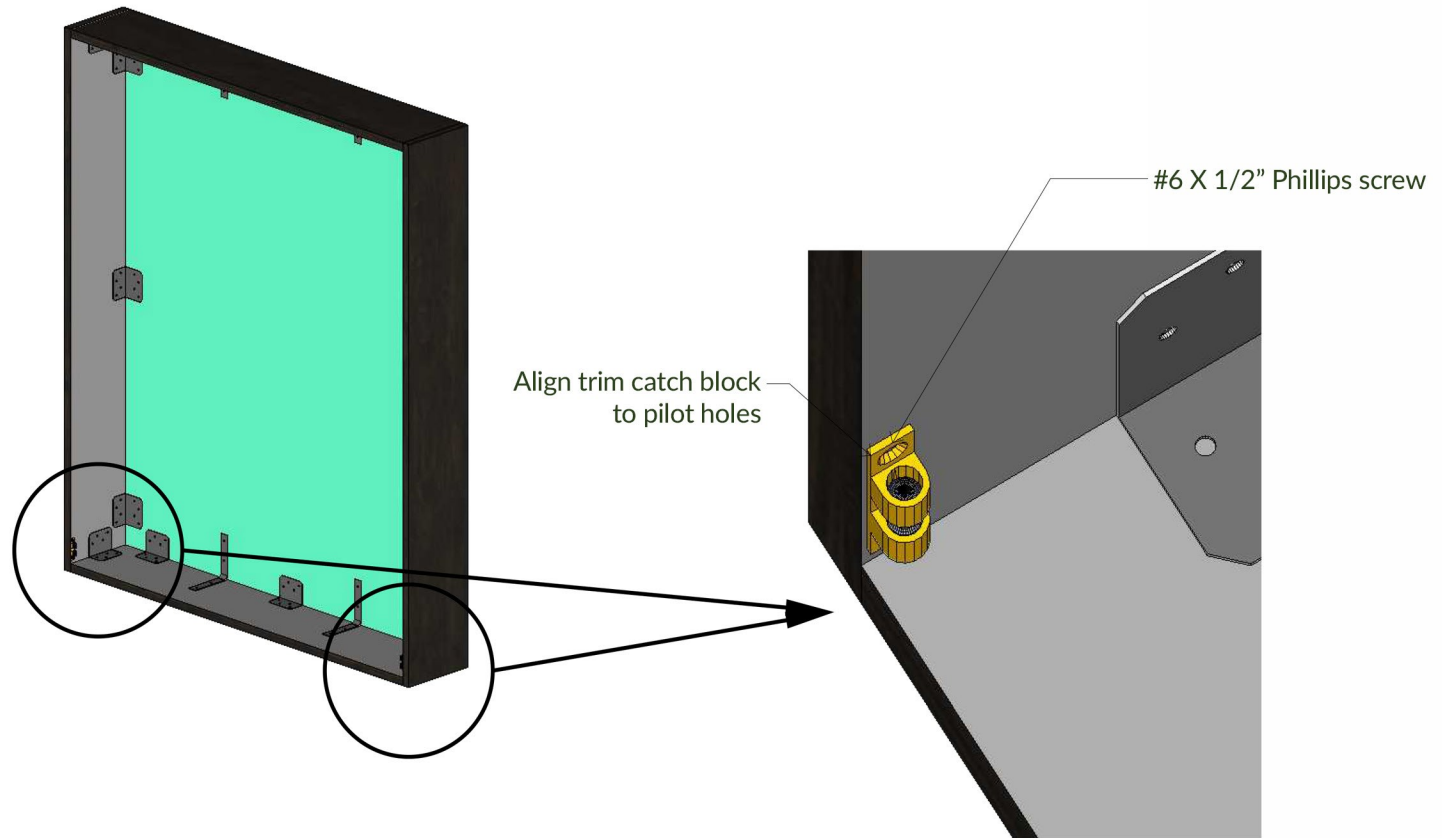
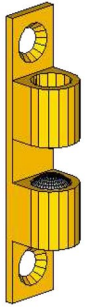
Trim light brace @ corner.



Designer Series E-Z Kit Wall Installation Guide

Parts used on this page.

Trim catch block



Tools used on this page.

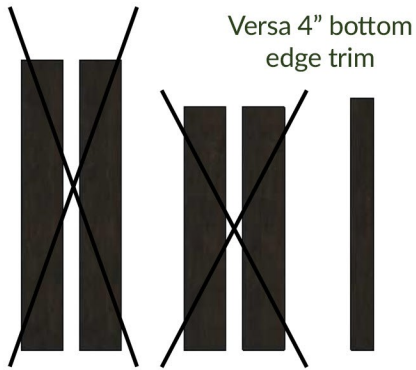
- Cordless drill
- #2 Phillips driver bit (included)

Step 1
Trim catch block

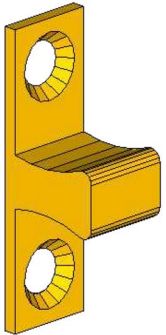


Designer Series E-Z Kit Wall Installation Guide

Parts used on this page.

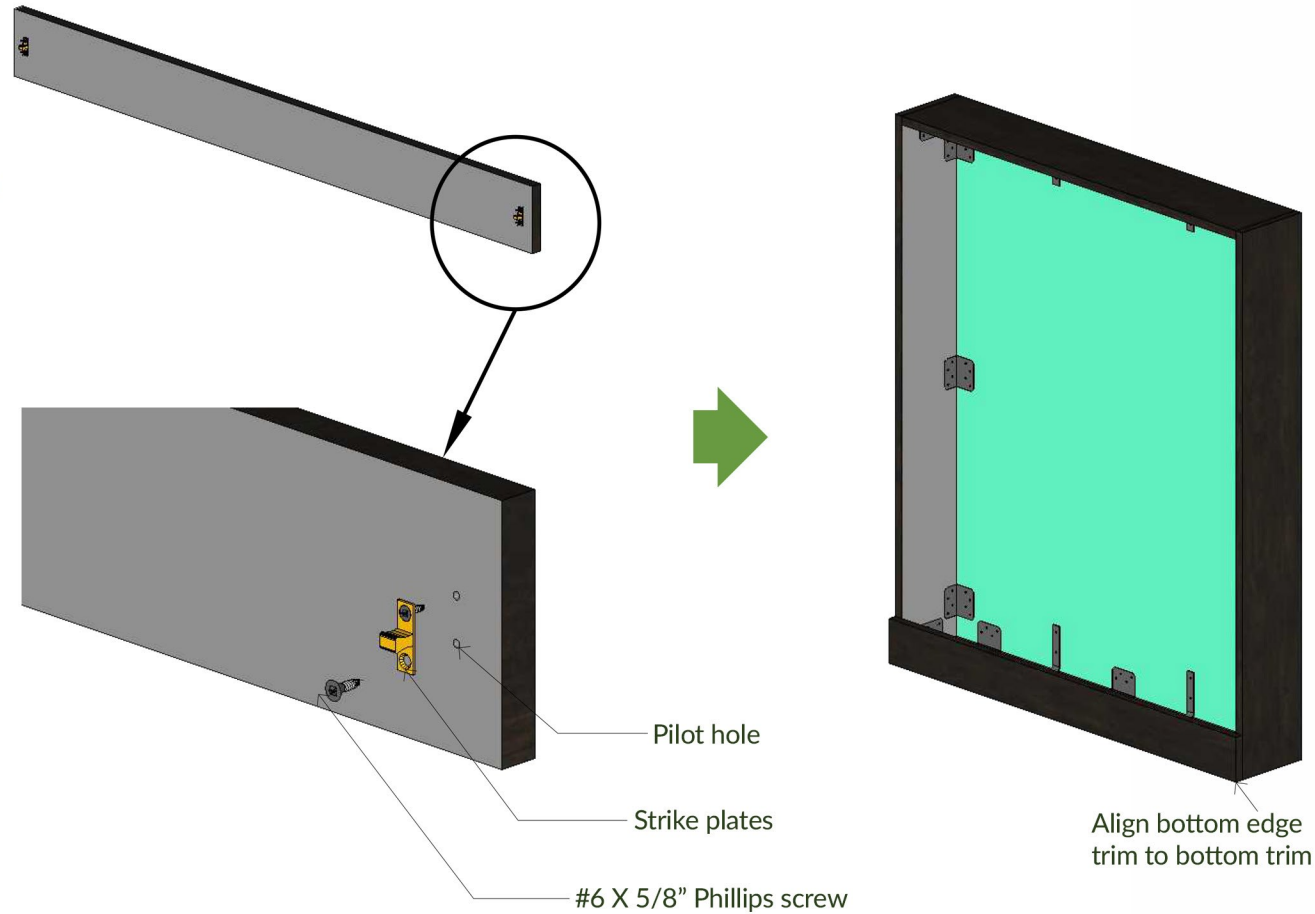


Trim catch tab



Tools used on this page.

- Cordless drill
- #2 Phillips driver bit (included)



Step 1

Versa 4" bottom edge trim preparation

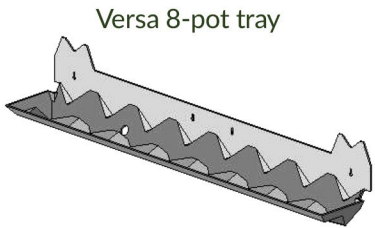
Step 2

Versa 4" bottom edge trim.



Designer Series E-Z Kit Wall Installation Guide

Parts used on this page.



Versa 8-pot tray

Versa tray fitting



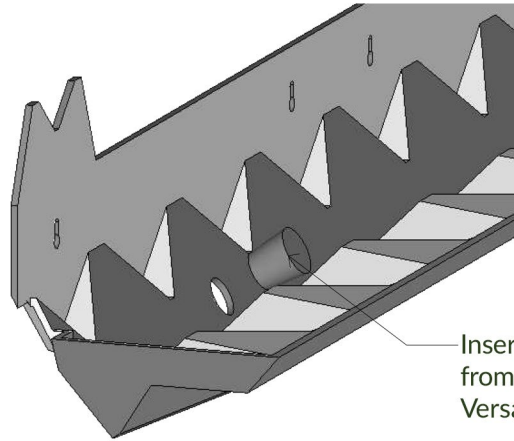
Versa tray plug



Tools used on this page.

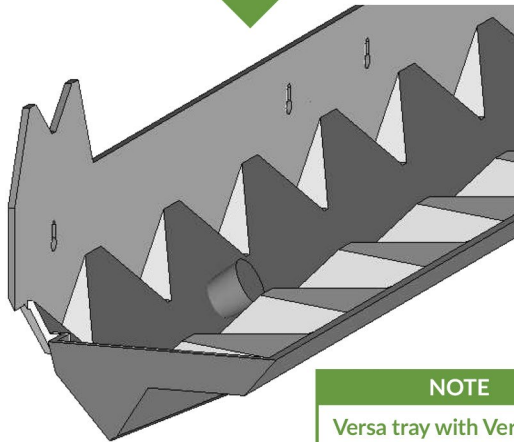
- none

Bottom tray



Insert Versa tray plug from the front side of Versa tray

x 1



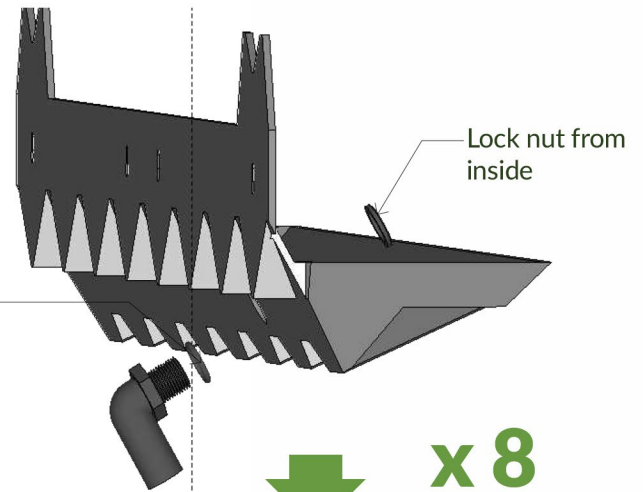
NOTE

Versa tray with Versa tray plug will be used at the bottom of green wall

Step 1

Tray assembly - Versa tray plug

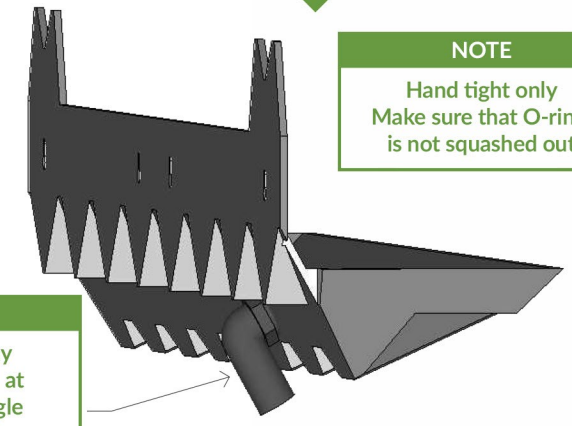
All other trays



Insert rubber O-ring from the back of tray

Lock nut from inside

x 8



NOTE

Hand tight only
Make sure that O-ring is not squashed out

NOTE

Ensure that tray fitting is angled at a 45 degree angle

Step 2

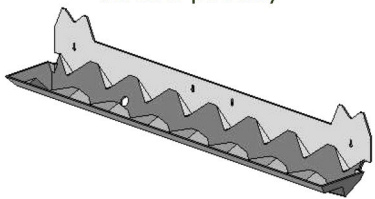
Tray assembly - Versa tray fitting



Designer Series E-Z Kit Wall Installation Guide

Parts used on this page.

Versa 8-pot tray

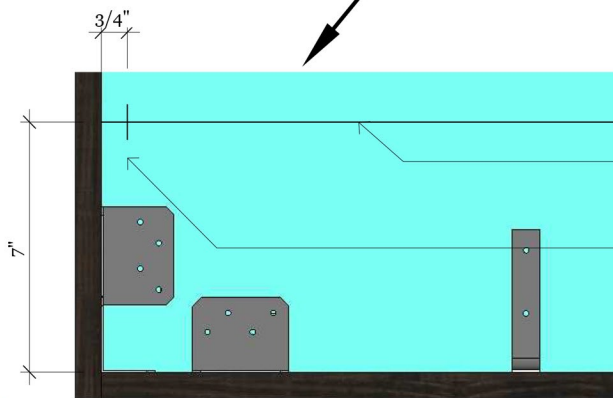
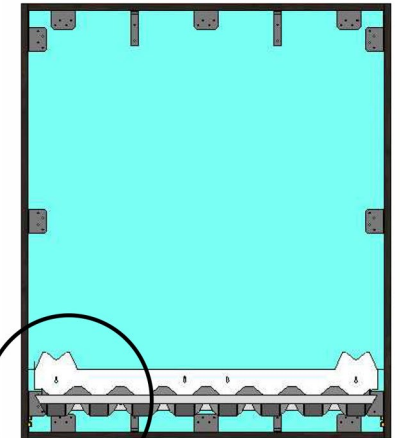
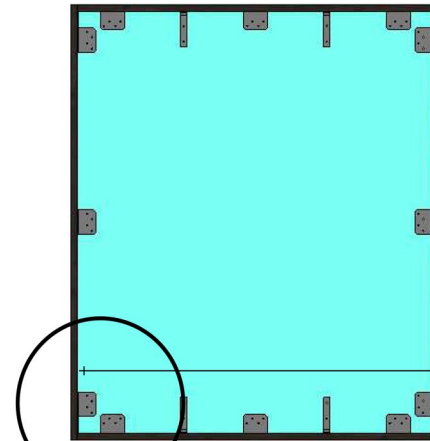


Versa tray screw



Tools used on this page.

- Pencil/pen
- 2' level
- Tape measure
- Straight edge
- Cordless drill
- 1/4" bit driver



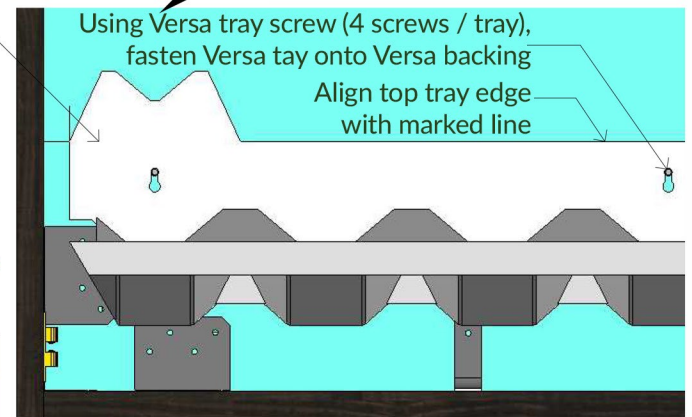
Locate outside corner of tray to marked position

Draw line @ 7" from edge of Versa backing

Draw line @ 3/4" from edge of Versa backing

NOTE

Make sure to use Versa tray with Versa tray plug at the bottom of the wall



Step 1

Versa 8-pot tray location

Step 2

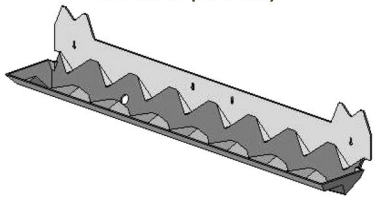
Versa 8-pot tray location



Designer Series E-Z Kit Wall Installation Guide

Parts used on this page.

Versa 8-pot tray



Versa tray screw



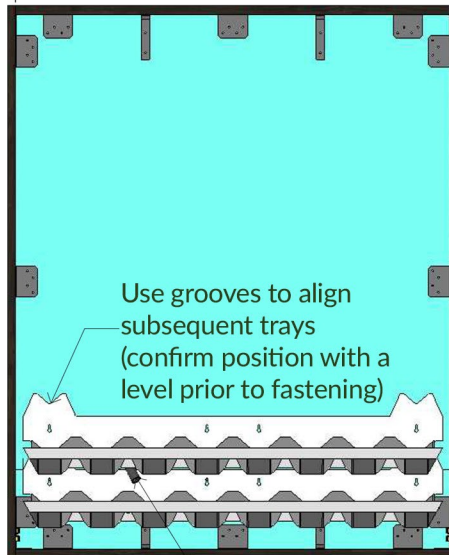
Tools used on this page.

- 2' level
- Cordless drill
- 1/4" bit driver

Use 4 tray screws

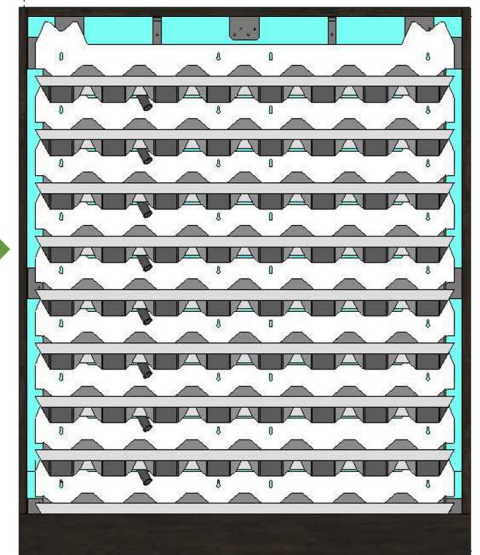
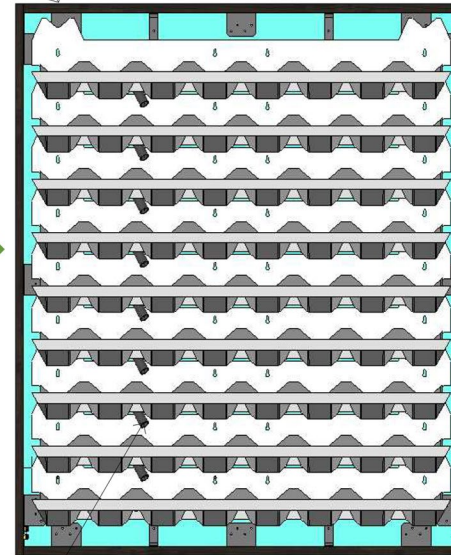
NOTE

Check each tray to be level while installing



Use grooves to align subsequent trays (confirm position with a level prior to fastening)

Ensure the tray fitting is on a 45 degree angle



Step 1

Versa 8-pot tray mounting

Step 2

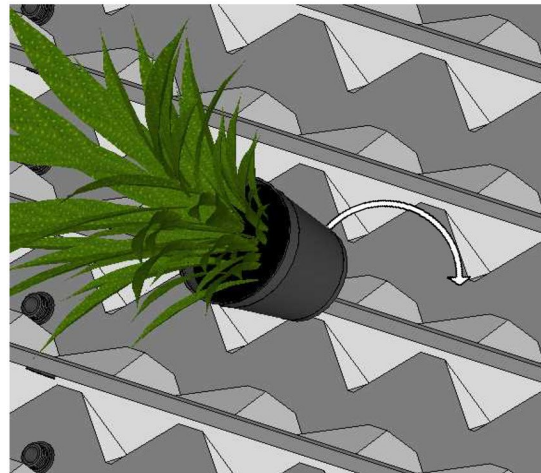
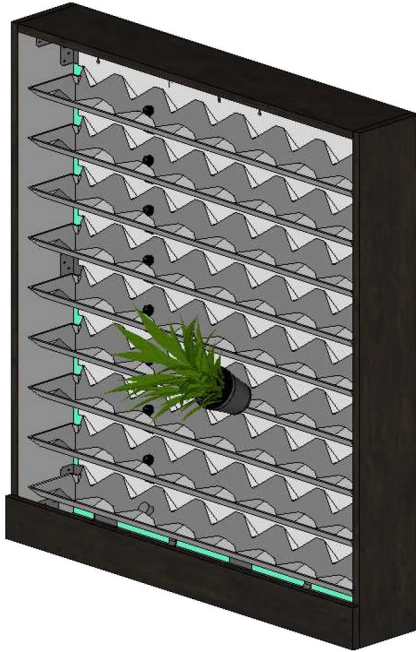
Versa 8-pot trays installed

Step 3

Bottom edge trim attached



Designer Series E-Z Kit Wall Installation Guide



NOTE

Plants are not included in the package, please source locally

Step 1 Plants