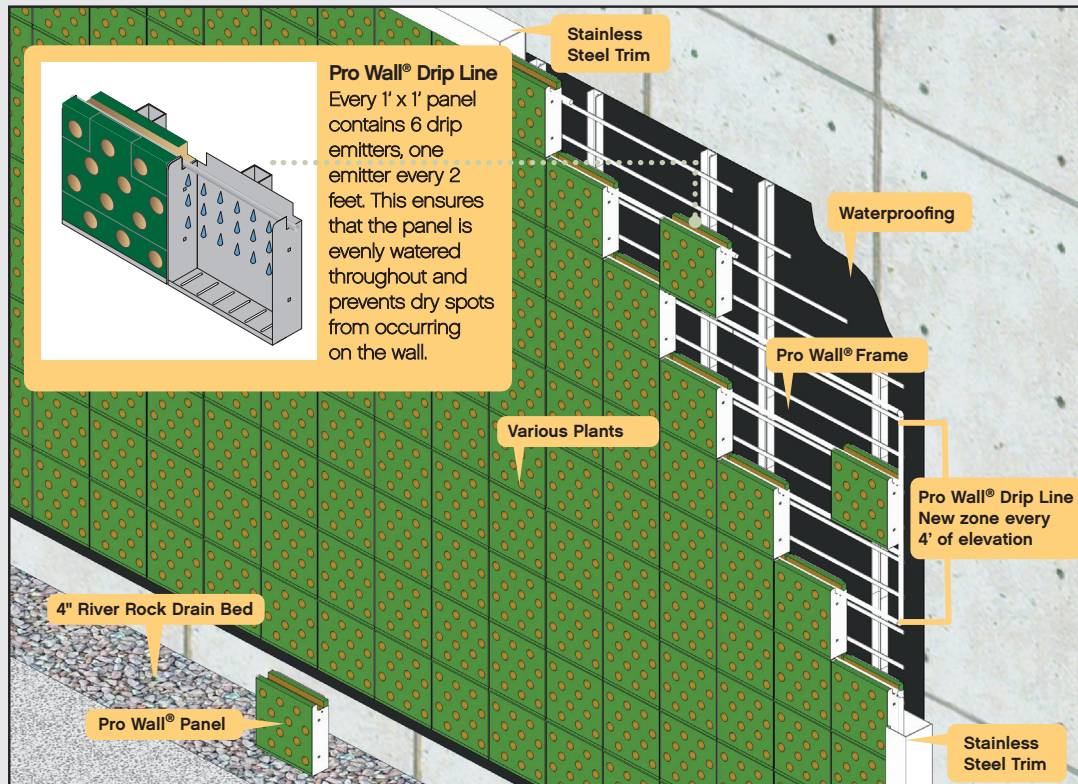




# PRO WALL®

## PRODUCT SPEC SHEET

DIAGRAM



SPECIFICATIONS

<b>Description</b>	Modular 1' x 1' stainless steel panels attached to a stainless steel frame	
<b>Suitable Walls</b>	Concrete, CMU, wood or metal frame, structural steel	
<b>Mounting</b>	Pro Wall® frames are mounted directly to the structure & panels are then hung	
<b>Panels</b>	<b>Material</b>	Stainless steel T304, mill finish
	<b>Growth Media</b>	Either rockwool block or coco fiber block, encased in a UV protected, non-woven fabric
	<b>Dimensions</b>	Standard: 11-7/8" H x 11-7/8" W x 3-1/2" D (300 x 300 x 85) Adj. Height: 6" to 18" H x 11-7/8" W x 3-1/2" D (150 to 450 x 300 x 85) Adj. Width: 11-7/8" H x 6" to 18" W x 3-1/2" D (300 x 150 to 450 x 85)
<b>Frames</b>	<b>Material</b>	Stainless steel T304 mill finish
	<b>Dimensions</b>	FR53: 4' 11-3/4" H x 2' 11-3/4" W x 1-1/2" D (1510 x 905 x 50)
<b>Irrigation</b>	<b>Drip Line</b>	Pro Wall® Drip Line, six 0.5GPH emitters / ft <sup>2</sup>
	<b>Controller</b>	Timer, valves, filter, fertilizer injector, regulators
	<b>Fittings</b>	Standard Pro PEX pipe & brass Push & Fit fittings system
	<b>Drainage</b>	Free drain, direct to bldg drainage, recirculating systems are possible
<b>Growth Time</b>	Minimum order is 10 months with minimum 16 weeks growth of the plants in the panels Plant installation cannot occur during the cold winter months	
<b>Maintenance</b>	Required, 1-year minimum & maintenance access by lift or ladder must be planned for	
<b>Warranty</b>	Panels 5 years, irrigation 2 years, plants only with GSKy® Maintenance Contract	
<b>System Weight</b>	30 lbs. per foot	

## Remote ICU

- Ideal for large installations with multiple wall sections or above-the-floor installations
- Typically located in a maintenance closet or similar
- Drainage necessary at ICU location in addition to green wall

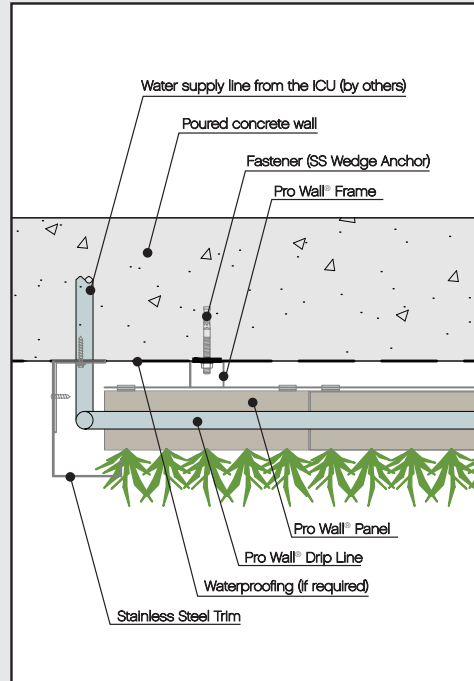
## Freezing Zone

- If wall is located in an area prone to freezing, additional components will be added accordingly

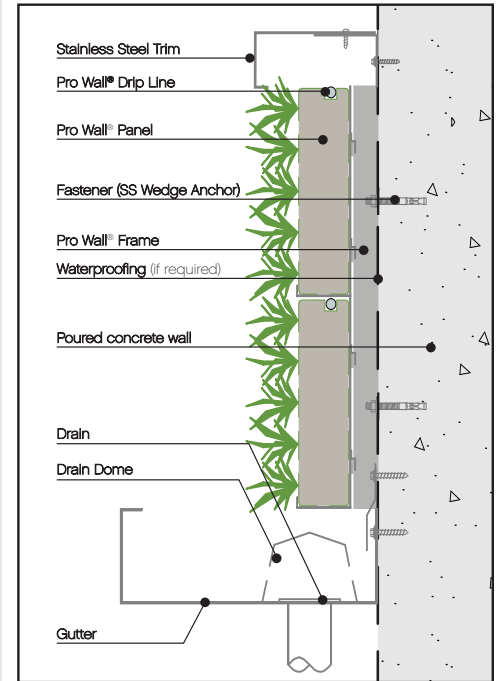
## Maintenance

- The owner must have an access plan in place prior to a wall being installed for ongoing maintenance. This includes provisions for not only the type of access, but also logistical items such as security, service time, clear pathway, surface protection & storage.
- Components of the wall system must be accessible. Whether located in the base of the wall or in a remote location, the maintenance provider must be able to reach these items for routine inspections.

### PLAN SECTION



### ELEVATION SECTION



## Features

- Pre-grown system for a minimum of 16 weeks at the nursery before delivery to the site
- Designed for heavy winds & wind-driven rain
- Structural growth medium
- Framing system designed with architects & building envelope engineers in mind
- Fully integrated liquid fertigation system

## Benefits

- Exceptional designability, a living work of art
- Removes toxins from the air
- Energy savings, produces oxygen
- Dampens noise pollution
- Highlights your "green initiatives"



versatile reliable proven