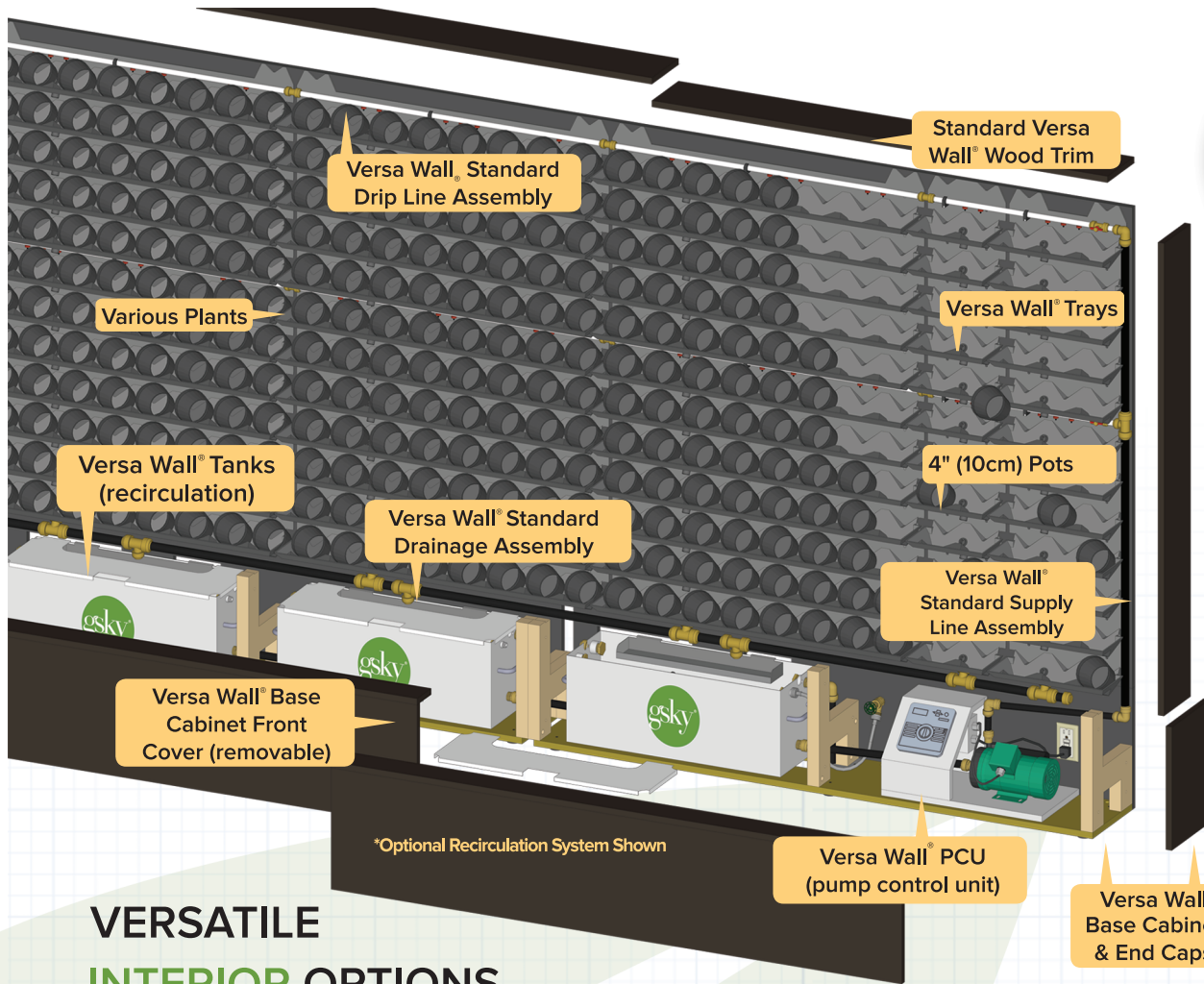




GSKY.COM

VERSA WALL®



Green Walls can contribute to LEED credits.

## VERSATILE INTERIOR OPTIONS

Versa Wall® can be built to virtually any size, & has a wide range of design capability. Water can be tied directly into the wall; tied into tank(s) that recirculate the water; or, tank(s) can be manually filled. Tank(s) can be placed below the wall, behind the wall, or in another room. Standard trim is available & can be custom made of wood or metal.



Uses 4" (10cm) Potted Plants

## FUNCTIONALITY - DRIVEN



### Trays are proprietary

& provide each plant its own water. No water escapes on the leaves or from the system. Overall simplicity of system & easy access to components.



### Water is managed

to specific automated intervals for a limited time & does not run 24/7.

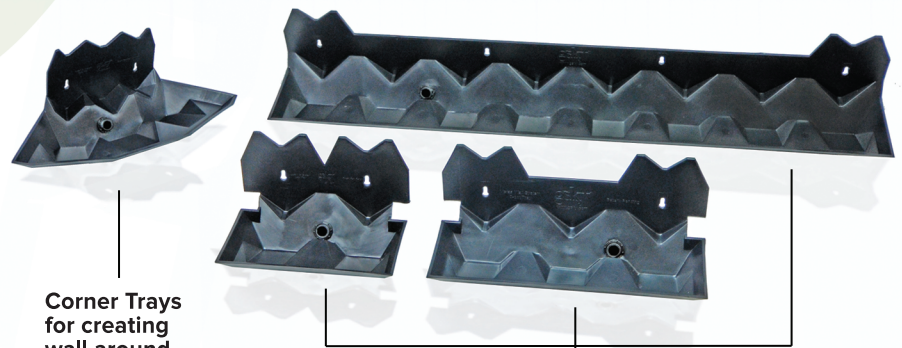


### Plants can be easily replaced

& cleaned to maintain their fullness. All things being equal, replacement rate for pots is less.



Seasonal and accent plants can be added inexpensively.



Corner Trays for creating wall around corners or around columns

Straight Trays to accommodate any dimension of wall

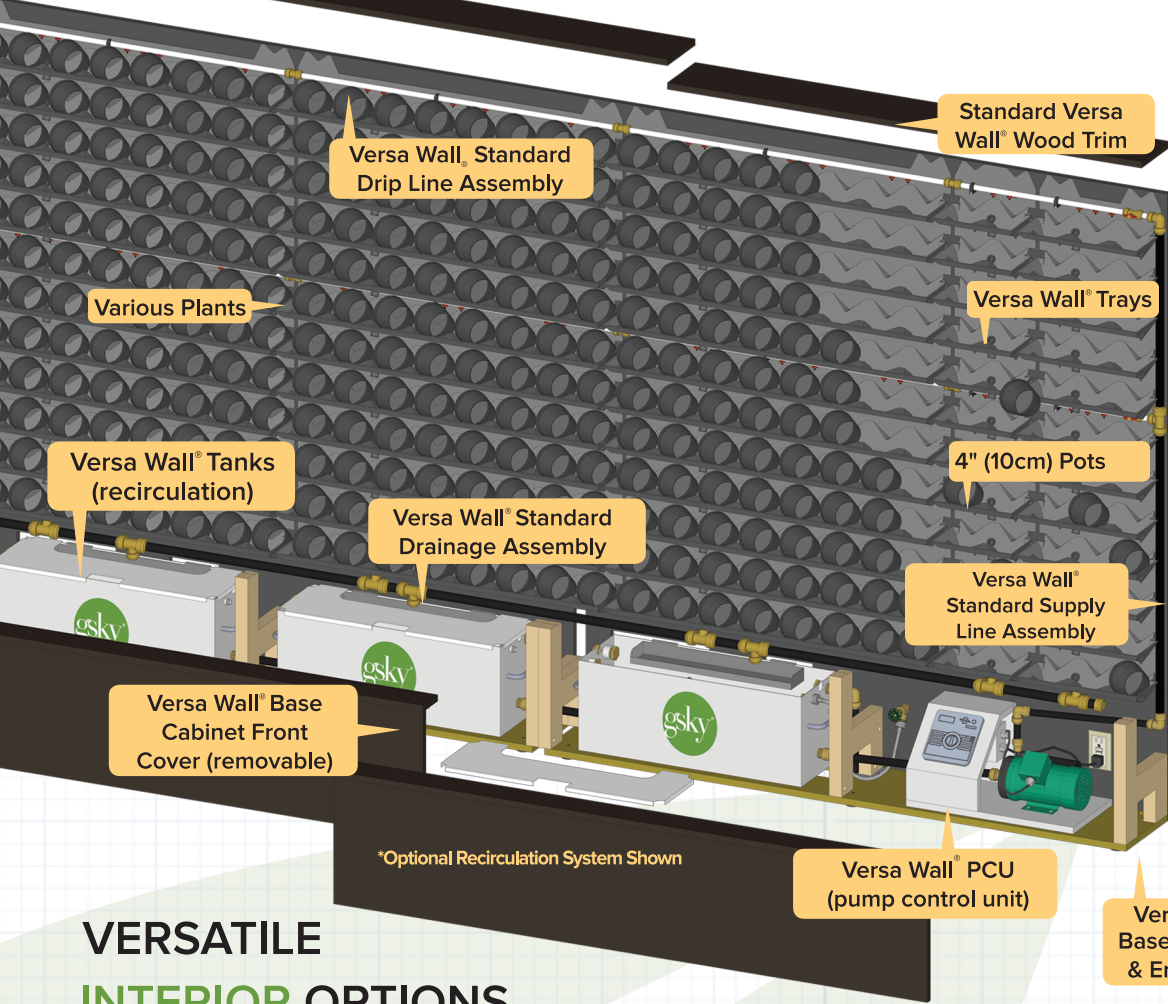
One or more product shown in this brochure may be protected by one or more U.S. & International patents, additional patents pending.





GSKY.COM

VERSA WALL®



Green Walls can contribute to LEED credits.

## VERSATILE INTERIOR OPTIONS

Versa Wall® can be built to virtually any size, & has a wide range of design capability. Water can be tied directly into the wall; tied into tank(s) that recirculate the water; or, tank(s) can be manually filled. Tank(s) can be placed below the wall, behind the wall, or in another room. Standard trim is available & can be custom made of wood or metal.



Uses 4" (10cm) Potted Plants

## FUNCTIONALITY - DRIVEN



### Trays are proprietary

& provide each plant its own water. No water escapes on the leaves or from the system. Overall simplicity of system & easy access to components.



### Water is managed

to specific automated intervals for a limited time & does not run 24/7.

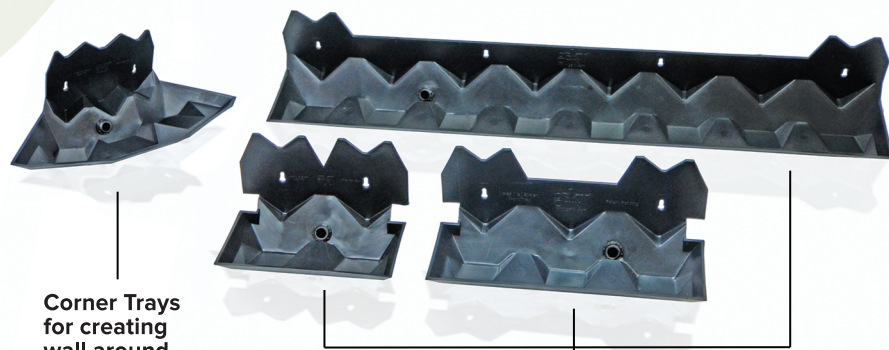


### Plants can be easily replaced

& cleaned to maintain their fullness. All things being equal, replacement rate for pots is less.



Seasonal and accent plants can be added inexpensively.



Corner Trays for creating wall around corners or around columns

Straight Trays to accommodate any dimension of wall

One or more product shown in this brochure may be protected by one or more U.S. & International patents, additional patents pending.