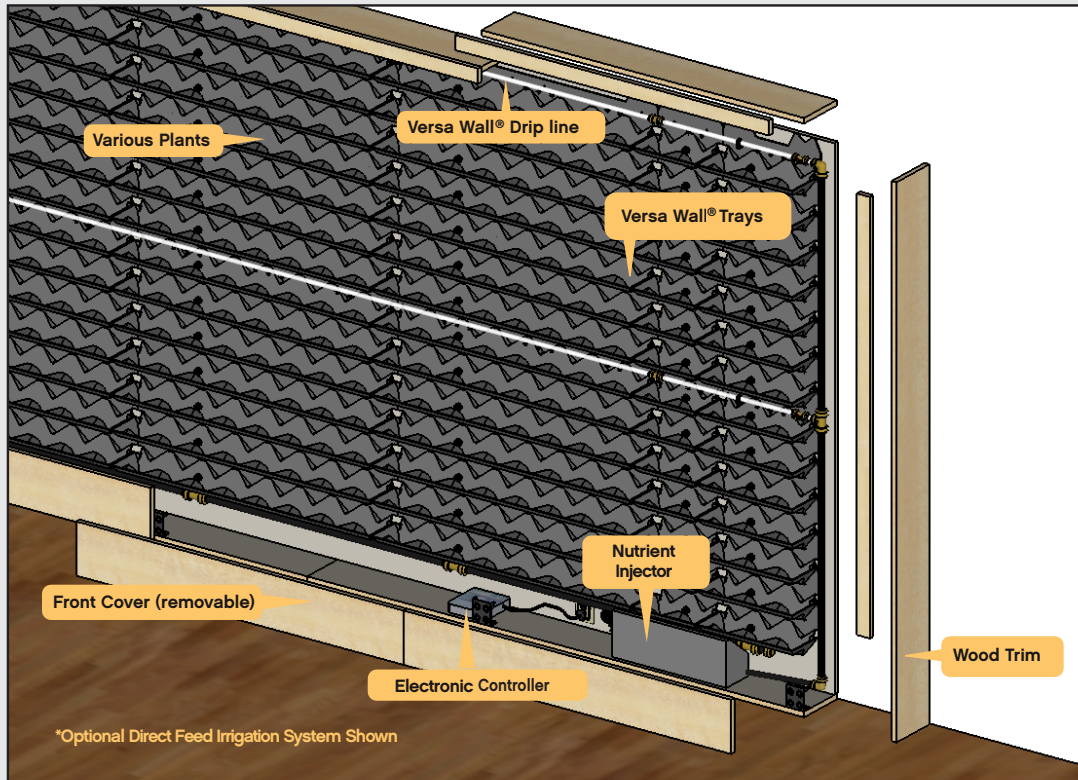




VERSA WALL[®]

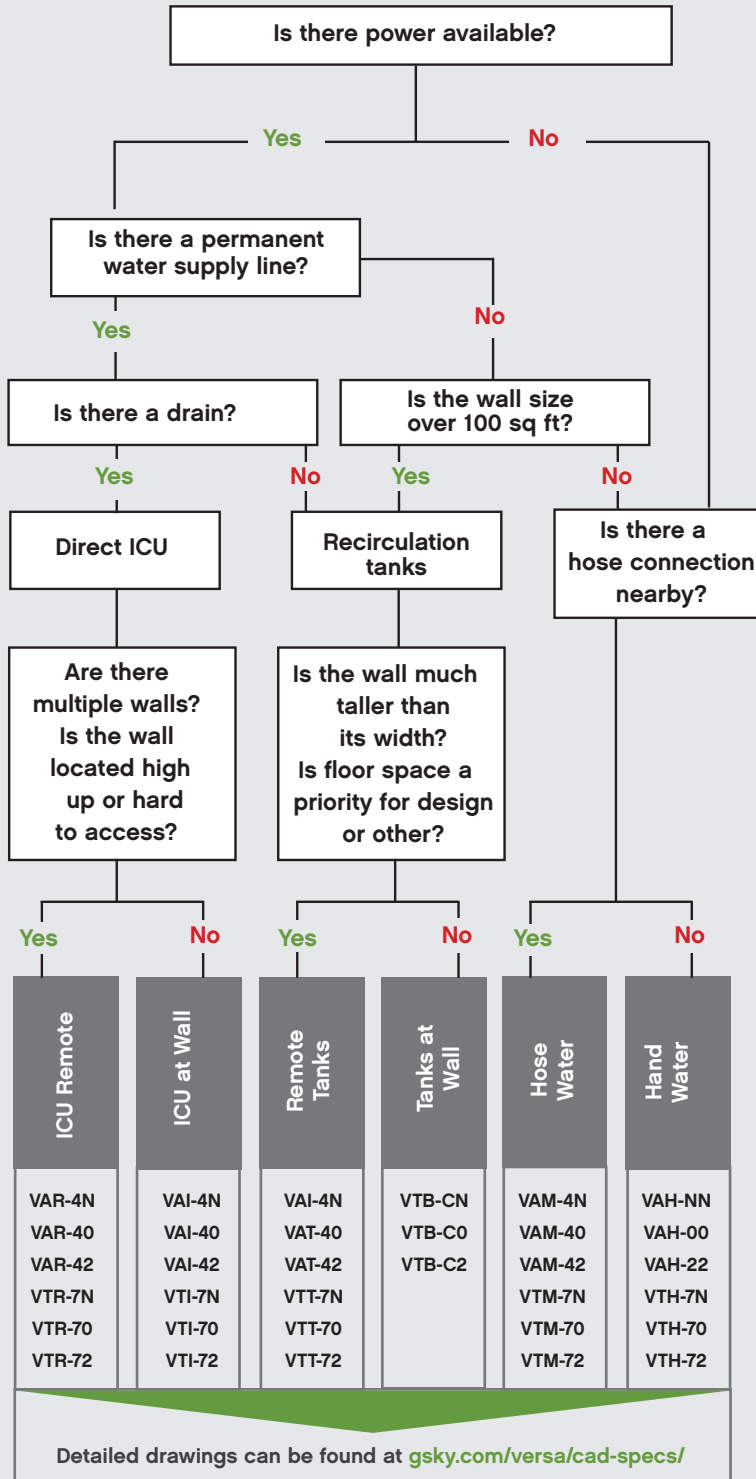
PRODUCT SPEC SHEET

DIAGRAM



SPECIFICATIONS

Description	Patent protected tray design that holds and waters industry standard 4" pots on the wall	
Suitable Walls	Concrete, CMU, wood or metal frame, structural steel	
Mounting	3/4" plywood mounted to the structure	
Trays	Material	100% recycled polypropylene with ABS drain fitting
	Growth Media	Typical nursery growth media
	Dimensions	8-Pot Tray: 4-3/4" H x 39-3/4" W x 6-3/8" D (120 x 1000 x 160) 3-Pot Tray: 4-3/4" H x 14-3/4" W x 6-3/8" D (120 x 375 x 160) 2-Pot Tray: 4-3/4" H x 9-7/4" W x 6-3/8" D (120 x 250 x 160) Corner 3-Pot Tray: 4-3/4" H x 8-1/8" W x 6-3/8" D (120 x 206 x 160) * back wall surface dimensions
Irrigation	Drip Line	Versa Wall® Drip Line 8-Pot, eight 0.5GPH emitters on a 39-3/8" W PEX pipe length Versa Wall® Drip Line 3-Pot, three 0.5GPH emitters on a 14 3/4" W PEX pipe length Versa Wall® Drip Line 2-Pot, two 0.5GPH emitters on a 9-7/8" W PEX pipe length
	Controller	Timer, pumps (or valves), filter, regulators, UV filter
	Fittings	Standard Versa Wall® PEX pipe and brass Push & Fit fittings system
	Tanks	Stainless steel Versa Wall® tanks (standard recirculating system)
	Drainage	Direct to drain or recirculating using standard Versa Wall® tanks
Growth Time	Minimum order is 4 weeks, depending on size and plant availability	
Maintenance	Required, 1-year minimum, maintenance access by lift or ladder must be planned for	
Warranty	Trays 5 years, irrigation 2 years, plants under GSKy® maintenance contract	



Lighting

- Ensure a green wall's success with proper lighting to promote healthy vigorous plants with uniform growth habits & minimal replacement.
- Interior plants need an even flood of 150 to 1500 lux of light provided across the entire surface of the wall for approximately 10 to 12 hours each day with a color temperature of 4000 – 4300 K. This can be best achieved with the use of LED or Metal Halide.

Remote ICU

- Ideal for large installations with multiple wall sections or above-the-floor installations
- Typically located in a maintenance closet or similar
- Drainage necessary at ICU location in addition to green wall

ICU at Wall

- Most recommended irrigation option (simplicity & optimization)
- Must be accessible by maintenance technicians with removable access panels

Remote Tanks

- Must be located below the lowest tray on the green wall (or the floor below)
- Requires a drain line between the wall location & the tank location
- Maximum distance from tanks to top of wall is 35'

Tanks at Wall

- Located in a base cabinet below the wall with a removable front cover. Maximum height of the wall is 35'
- Minimum wall width of 6' with 3' additional space required for every additional tank
- Can be included without water supply & drain, but tanks must be manually filled (schedule cannot be automatic under these conditions)

Manual Watering

- Can be hose watered with a water caddy (with sufficient pressure) or a hose run to a hose bib
- Not recommended for walls larger than 200 ft²
- Requires high maintenance involvement

Hand Watered

- Not recommended for walls larger than 50 ft²
- Requires high maintenance involvement

Maintenance

- The owner must have an access plan in place prior to a wall being installed for ongoing maintenance. This includes provisions for not only the type of access, but also logistical items such as security, service time, clear pathway, surface protection & storage.
- Components of the wall system must be accessible. Whether located in the base of the wall or in a remote location, the maintenance provider must be able to reach these items for routine inspections.